



Welcome to Instant Demo!

- ▶ Record your Windows desktop activity in real time.
- ▶ Screen recorder is quick, simple and easy to use.
- ▶ Ideal for web based product demonstrations.
- ▶ Enhance your on-line help documentation.
- ▶ Add a professional edge to your customer support.
- ▶ Create effective training material in minutes.



Now with
TrakMouse™
technology



version
8.60
released

**A picture paints a thousand words -
an Instant Demo
paints a million!**



Using a very simple interface you can create animated Flash demos quickly and easily. Most controls to edit and annotate are contained in just one window!



Using our unique smart capture technology, you can record smooth mouse movement and visual changes to any application on your desktop!

**Order
Securely
Online**

Buy Now

View a [tutorial](#) to see how quickly and easily you will be creating your own professional tutorials and demonstrations.



[View a Tutorial](#)

Copyright © 2003 - 2015 NetPlay Software

Instant Demo is a trademark of NetPlay Software.

Windows Vista and the Windows Vista Start button are trademarks or registered trademarks of Microsoft Corporation in the United States and/or other countries.

[Tutorials](#)

[Buy Now](#)

[Support](#)

[Upgrade](#)

[Contact Us](#)

[NetPlay](#)[Buy Now](#)[Support](#)[Contact Us](#)

Instant
Demo™

How to Use Help

The best way to use this help file is by using the **context sensitive** help within Instant Demo. The quickest way to find a help topic is to click on the control you are interested in and then press the **F1** key. You can also use the question mark button that appears in the top right hand corner of the controls window.



Copyright © 2003 - 2015 NetPlay Software
Instant Demo is a trademark of NetPlay Software.

[NetPlay](#)[Buy Now](#)[Support](#)[Contact Us](#)



[NetPlay](#)

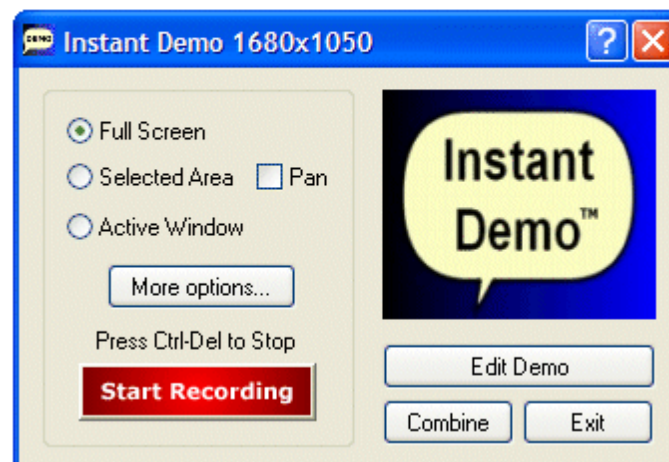
[Buy Now](#)

[Support](#)

[Contact Us](#)

Instant
Demo™

Instant Demo Recording



Copyright © 2003 - 2015 NetPlay Software
Instant Demo is a trademark of NetPlay Software.

[NetPlay](#)

[Buy Now](#)

[Support](#)

[Contact Us](#)



[NetPlay](#)

[Buy Now](#)

[Support](#)

[Contact Us](#)



Copyright © 2003 - 2015 NetPlay Software
Instant Demo is a trademark of NetPlay Software.

[NetPlay](#)

[Buy Now](#)

[Support](#)

[Contact Us](#)

[NetPlay](#)[Buy Now](#)[Support](#)[Contact Us](#)A yellow speech bubble with a black outline containing the text "Instant Demo™".

**Instant
Demo™**

Screen Capture Modes

Instant Demo has three recording modes: **Full Screen**, **Selected Area** and **Active Window**. Check Full Screen to capture the entire desktop. Check Selected Area to select and capture just a small part of your desktop. Check Active Window to automatically set the capture area to the active application window (click on the title bar of the application you wish to capture to make it active).

When capturing a 'Selected Area', click on the red selection oblong with the **left mouse button** to change the size of the capture area. Click on the red selection oblong with the **right mouse button** to reposition the capture area without changing the size.

For a full screen **Zoom and Pan** presentation record in **Full Screen** mode and use the [TrakMouse™](#) option available in the Instant Demo editor (Professional version only).

Multiple monitors: Instant Demo supports multiple monitor recording. When using **Full Screen** mode and more than one monitor is available, a selection list will appear beside the Full Screen option allowing you to record an individual monitor or all monitors combined.

Copyright © 2003 - 2015 NetPlay Software
Instant Demo is a trademark of NetPlay Software.

[NetPlay](#)[Buy Now](#)[Support](#)[Contact Us](#)

[NetPlay](#)[Buy Now](#)[Support](#)[Contact Us](#)A yellow speech bubble with a black outline containing the text "Instant Demo™".

Instant
Demo™

TrakMouse™ (Zoom and Pan)

(Professional version only)

Instant Demo allows you to create a **Zoom and Pan** style presentation within the Instant Demo movie editor. This feature allows you to produce a demonstration with a zoomed in view of the Windows desktop or application, resulting in a high quality movie that can be displayed on systems with a smaller screen size. In most cases you will want to set the capture area to [Full Screen](#) when recording.

Tips on using **TrakMouse™ Zoom and Pan**:

Instant Demo follows the mouse movement of your presentation. To avoid confusion for your viewers, we recommend you move the mouse in a slow and steady manner whilst recording. This will produce a professional pan effect for your captured movies. Try performing a few practice recordings so as to familiarize yourself with the motion and 'feel' of the TrakMouse™ effect when editing.

For more information see the [Zoom to Region](#) frame effect.

Copyright © 2003 - 2015 NetPlay Software
Instant Demo is a trademark of NetPlay Software.

[NetPlay](#)[Buy Now](#)[Support](#)[Contact Us](#)

[NetPlay](#)[Buy Now](#)[Support](#)[Contact Us](#)A yellow speech bubble containing the text "Instant Demo™".

Instant
Demo™

How to capture DVD video - avoiding a black screen

Many video or DVD playback applications use a special playback mode that displays directly to your video hardware. To capture video from these applications you must select the '[Capture video hardware](#)' via the 'More Options...' button in the Instant Demo recording panel. In all cases you **must** start Instant Demo with this option selected **before** opening the video playback application. If your Instant Demo recording captures only a black square instead of the desired video output, then you need to close down the video player software, click on the 'Record' button in Instant Demo, and then re-start the video player.

If part of the display is still missing from your video capture, then you may also need to enable capturing of [transparent windows](#) via the 'More Options...' button in the Instant Demo recording panel.

Copyright © 2003 - 2015 NetPlay Software
Instant Demo is a trademark of NetPlay Software.

[NetPlay](#)[Buy Now](#)[Support](#)[Contact Us](#)

[NetPlay](#)[Buy Now](#)[Support](#)[Contact Us](#)

More Recording Options

[Options - Recording options... Ctrl+V]

Click on this button to open the Recording Options window. Here you can adjust additional recording options such as live sound recording, mouse appearance, capture frame rate and temporary video location.

Copyright © 2003 - 2015 NetPlay Software
Instant Demo is a trademark of NetPlay Software.

[NetPlay](#)[Buy Now](#)[Support](#)[Contact Us](#)

[NetPlay](#)[Buy Now](#)[Support](#)[Contact Us](#)

Instant
Demo™

Record Sound

[Options - Recording options... Ctrl+V - Sound Options - Record Sound]

Check this option to record sound whilst recording your screen activity. The default sound source is the microphone input to your computer. Click on the '**Sound settings...**' button to select a different sound source and set the quality of the sound recording. You can also add a pre-recorded sound track or create a sound track later when [editing](#) your movie.

Copyright © 2003 - 2015 NetPlay Software
Instant Demo is a trademark of NetPlay Software.

[NetPlay](#)[Buy Now](#)[Support](#)[Contact Us](#)

[NetPlay](#)[Buy Now](#)[Support](#)[Contact Us](#)A yellow speech bubble containing the text "Instant Demo™".

**Instant
Demo™**

Recording Quality

[Recording panel - Options - Sound settings... Ctrl+S]

[Editor - Format - View Sound Alt+T - Settings...]

Use this option to set the sound recording sample rate. A higher value will provide better quality sound. The number of recording channels can also be set to mono or stereo. If you are recording voice via a single microphone then use the mono option.

Copyright © 2003 - 2015 NetPlay Software
Instant Demo is a trademark of NetPlay Software.

[NetPlay](#)[Buy Now](#)[Support](#)[Contact Us](#)

[NetPlay](#)[Buy Now](#)[Support](#)[Contact Us](#)

Recording Device

[Recording panel - Options - Sound settings... Ctrl+S]

[Editor - Format - View Sound Alt+T - Settings...]

This option assigns the sound recording device to be used by Instant Demo. The default sound source is the microphone input to your computer.

Copyright © 2003 - 2015 NetPlay Software
Instant Demo is a trademark of NetPlay Software.

[NetPlay](#)[Buy Now](#)[Support](#)[Contact Us](#)



NetPlay

Buy Now

Support

Contact Us

Instant
Demo™

Test Sound Recording Device

[Recording panel - Options - Sound settings... Ctrl+S]

[Editor - Format - View Sound Alt+T - Settings...]

Click on this button to test the selected audio recording device using the [Recorded Sound Monitor](#).

Copyright © 2003 - 2015 NetPlay Software
Instant Demo is a trademark of NetPlay Software.

NetPlay

Buy Now

Support

Contact Us

[NetPlay](#)[Buy Now](#)[Support](#)[Contact Us](#)A yellow speech bubble with a black outline containing the text "Instant Demo™".

**Instant
Demo™**

Recorded Sound Monitor

[Recording panel - Options - Sound settings... Ctrl+S - Test]

[Editor - Format - View Sound Alt+T - Settings... - Test]

The Recorded Sound Monitor displays a graph of the recorded sound. The monitor can be used to test the selected audio device and for monitoring the recording volume.

A blue graph indicates the recording volume is too low. A low volume recording may contain a lot of background noise that is difficult to remove. Try increasing the input volume of the recording device via the Settings... button or increase the volume of the sound source.

A red graph indicates the recording volume is too high. A high volume recording may become clipped and sound distorted. Try decreasing the input volume of the recording device via the Settings... button or decrease the volume of the sound source.

A green graph indicates the recording volume is OK.

Copyright © 2003 - 2015 NetPlay Software
Instant Demo is a trademark of NetPlay Software.

[NetPlay](#)[Buy Now](#)[Support](#)[Contact Us](#)



NetPlay

Buy Now

Support

Contact Us



Display Sound Monitor

[Recording panel - Options - Sound settings... Ctrl+S]

[Editor - Format - View Sound Alt+T - Settings...]

Select this option to automatically display the [Recorded Sound Monitor](#) when recording your movie. The monitor can be used during recording to ensure optimal sound volume.

Copyright © 2003 - 2015 NetPlay Software
Instant Demo is a trademark of NetPlay Software.

NetPlay

Buy Now

Support

Contact Us

[NetPlay](#)[Buy Now](#)[Support](#)[Contact Us](#)

Device Settings

[Recording panel - Options - Sound settings... Ctrl+S]

[Editor - Format - View Sound Alt+T - Settings...]

Click on this button to display the Windows Recording Control panel for the selected audio device. This allows you to change the audio source and recording volumes.

Copyright © 2003 - 2015 NetPlay Software
Instant Demo is a trademark of NetPlay Software.

[NetPlay](#)[Buy Now](#)[Support](#)[Contact Us](#)

[NetPlay](#)[Buy Now](#)[Support](#)[Contact Us](#)A yellow speech bubble with a black outline containing the text "Instant Demo™".

Instant
Demo™

Normalize sound / Dynamic range

[Recording panel - Options - Sound settings... Ctrl+S]

[Editor - Format - Sound volume... Alt+Q - Sound Profile...]

This option will normalize the volume of your sound recording. The volume of a voice recording can vary greatly from one recording session to the next, depending on how loud you speak at the time and the distance at which you hold the microphone. This option will ensure that your sound recording will have the same maximum volume regardless of how loud or soft the original sound source. The maximum volume is defined as a percentage of the dynamic range of a recording device. When removing noise, it is recommended the maximum volume is not set above 90%.

Copyright © 2003 - 2015 NetPlay Software
Instant Demo is a trademark of NetPlay Software.

[NetPlay](#)[Buy Now](#)[Support](#)[Contact Us](#)

[NetPlay](#)[Buy Now](#)[Support](#)[Contact Us](#)

A yellow speech bubble containing the text "Instant Demo" in a bold, black font.

Remove noise / Detection level

[Recording panel - Options - Sound settings... Ctrl+S]

[Editor - Format - Sound volume... Alt+Q - Sound Profile...]

This option when checked will remove continuous noise (such as hiss and/or hum) from your recording. Instant Demo uses an automatic noise detection algorithm to remove noise from your sound recording, providing studio quality voice recording capabilities from a standard PC microphone. The noise 'Detection level' controls how aggressively Instant Demo tries to remove noise from your sound recording. Please note that for best quality sound you should record in a quiet location. The noise removal technology will not remove intermittent background noise such as a door slamming or a television/radio playing in the background.

Please note that the Instant Demo noise reduction technique does not change your original recorded sound file, instead a second sound file containing the 'noise profile' of your original recording is used. This noise profile can be changed or mixed with your original recording during editing. See the '[Sound Quality](#)' option in the editing section for more information on how you can further improve the quality of your sound.

Copyright © 2003 - 2015 NetPlay Software
Instant Demo is a trademark of NetPlay Software.

[NetPlay](#)[Buy Now](#)[Support](#)[Contact Us](#)

[NetPlay](#)[Buy Now](#)[Support](#)[Contact Us](#)

Record Mouse Activity

[Options - Recording options... Ctrl+V - Mouse Options - Record mouse]

Uncheck this option if you do not wish to capture and display the mouse in your movie.

Copyright © 2003 - 2015 NetPlay Software
Instant Demo is a trademark of NetPlay Software.

[NetPlay](#)[Buy Now](#)[Support](#)[Contact Us](#)

[NetPlay](#)[Buy Now](#)[Support](#)[Contact Us](#)

Smooth Mouse Movement

[Options - Recording options... Ctrl+V - Mouse Options - Smooth movement]

This option will smooth the captured motion of the mouse. When checked, Instant Demo will ensure that the distance between each mouse capture is approximately equal over a given period of time. This option dampens any irregular mouse movements, providing a more polished look to your presentation.

Copyright © 2003 - 2015 NetPlay Software
Instant Demo is a trademark of NetPlay Software.

[NetPlay](#)[Buy Now](#)[Support](#)[Contact Us](#)

[NetPlay](#)[Buy Now](#)[Support](#)[Contact Us](#)Instant Demo™

Capture Rate

[Options - Recording options... Ctrl+V - Capture Rate]

Instant Demo allows you to set the capture rate of your Windows desktop during recording. The capture rate is the number of snapshots taken of your desktop over a period of one second. For example, a capture rate of 5 would tell Instant Demo to take five snapshots per second of your desktop. A movie that is one minute long (60 seconds) with a capture rate of 5 would have $60 * 5 = 300$ snapshots.

A low capture rate will result in better compression of your movie (less snapshots), however it may provide poorer animation (less smooth). A high capture rate will provide smooth animation, however it may increase the size of your movie.

Instant Demo provides a special feature that allows you to set the [mouse capture rate](#) independently of the [screen capture rate](#). Capturing mouse movement and appearance does not require a powerful computer. This feature creates a high quality desktop video appearance on most computer systems.

Please note: Depending on the hardware configuration of your computer, a requested capture frame rate may not be achievable. Instant Demo will however attempt to capture at the closest possible rate.

Instant Demo also provides a special feature for [smoothing](#) the captured motion of the mouse. When active, Instant Demo will ensure that the distance between each mouse capture is approximately equal over a given period of time. This option dampens any irregular mouse movements, providing a more polished look to your presentation.

Copyright © 2003 - 2015 NetPlay Software
Instant Demo is a trademark of NetPlay Software.

[NetPlay](#)[Buy Now](#)[Support](#)[Contact Us](#)

[NetPlay](#)[Buy Now](#)[Support](#)[Contact Us](#)

Mouse Capture Rate

[Options - Recording options... Ctrl+V - Capture Rate]

This option allows you set the [capture rate](#) of the mouse. A higher setting will provide smoother animation.

Copyright © 2003 - 2015 NetPlay Software
Instant Demo is a trademark of NetPlay Software.

[NetPlay](#)[Buy Now](#)[Support](#)[Contact Us](#)

[NetPlay](#)[Buy Now](#)[Support](#)[Contact Us](#)

Instant
Demo™

Screen Capture Rate

[Options - Recording options... Ctrl+V - Capture Rate - Screen]

This option allows you set the screen [capture rate](#) of your desktop applications. A higher setting will provide smoother animation. A lower setting will provide better compression of your final movie.

Please note: Depending on the hardware configuration of your computer, a requested capture frame rate may not be achievable. Instant Demo will however attempt to capture at the closest possible rate.

Copyright © 2003 - 2015 NetPlay Software
Instant Demo is a trademark of NetPlay Software.

[NetPlay](#)[Buy Now](#)[Support](#)[Contact Us](#)

[NetPlay](#)[Buy Now](#)[Support](#)[Contact Us](#)

Follow Active Window

[Options - Recording options... Ctrl+V - Special Options]

When checked, this option forces the recording area to track the currently active window on your desktop. The size of the recording region does not change, only the position. This option is not applicable for full screen recording.

Copyright © 2003 - 2015 NetPlay Software
Instant Demo is a trademark of NetPlay Software.

[NetPlay](#)[Buy Now](#)[Support](#)[Contact Us](#)

[NetPlay](#)[Buy Now](#)[Support](#)[Contact Us](#)

Record transparent / layered windows

[Options - Recording options... Ctrl+V - Special Options]

Check this option to capture transparent or layered window effects. A layered or transparent window is used by some applications to create a fade-in/out effect for menus and windows. Layered windows are also used for desktop animation, such as animated help assistants. Enable this option if a part of your application does not appear to be captured by Instant Demo.

Copyright © 2003 - 2015 NetPlay Software
Instant Demo is a trademark of NetPlay Software.

[NetPlay](#)[Buy Now](#)[Support](#)[Contact Us](#)

[NetPlay](#)[Buy Now](#)[Support](#)[Contact Us](#)

A yellow speech bubble containing the text "Instant Demo" in a bold, black font. The speech bubble has a small tail pointing towards the bottom left.

Capture video hardware

[Options - Recording options... Ctrl+V - Special Options]

Many video or DVD playback applications use a special playback mode that displays directly to your video hardware. Check this option to capture video from these applications. In all cases you **must** start Instant Demo with this option selected **before** opening the video playback application. If your Instant Demo recording captures only a black square instead of the desired video output, then you need to close down the video player software, click on the 'Record' button in Instant Demo, and then re-start the video player.

If part of the display is still missing from your video capture, then you may also need to enable capturing of [transparent windows](#) via the 'More Options...' button in the Instant Demo recording panel.

Copyright © 2003 - 2015 NetPlay Software
Instant Demo is a trademark of NetPlay Software.

[NetPlay](#)[Buy Now](#)[Support](#)[Contact Us](#)

[NetPlay](#)[Buy Now](#)[Support](#)[Contact Us](#)A yellow speech bubble with a black outline containing the text "Instant Demo™".

**Instant
Demo™**

Extra Compression on Raw Video

[Options - Recording options... Ctrl+V - Special Options]

Check this option to compress your captured video in real time. This will reduce the amount of space required to store your raw video, however it will require additional CPU during the capture process. This may result in a lower capture frame rate on some computer systems.

Copyright © 2003 - 2015 NetPlay Software
Instant Demo is a trademark of NetPlay Software.

[NetPlay](#)[Buy Now](#)[Support](#)[Contact Us](#)

[NetPlay](#)[Buy Now](#)[Support](#)[Contact Us](#)A yellow speech bubble with a black outline containing the text "Instant Demo™".

Instant
Demo™

Record in a Loop

[Options - Recording options... Ctrl+V - Special Options]

Check this option if you wish to retain only the last specified '*n*' minutes of your recording. This option allows you to record indefinitely whilst only using the disk space required for the specified number of minutes.

Loop recording is ideal for problem tracking and monitoring of software applications.

Copyright © 2003 - 2015 NetPlay Software
Instant Demo is a trademark of NetPlay Software.

[NetPlay](#)[Buy Now](#)[Support](#)[Contact Us](#)

[NetPlay](#)[Buy Now](#)[Support](#)[Contact Us](#)

Temporary Video Location

[Options - Recording options... Ctrl+V - Temporary Video Location]

Instant Demo uses the Windows default temporary storage area on your computer when recording your movie. Since recording screen activity requires a large amount of disk space, you may wish to change this location to another disk drive. Use the 'Browse' button to select another directory location.

Copyright © 2003 - 2015 NetPlay Software
Instant Demo is a trademark of NetPlay Software.

[NetPlay](#)[Buy Now](#)[Support](#)[Contact Us](#)



NetPlay

Buy Now

Support

Contact Us

Instant
Demo™

Record Pause Hotkey

Press the Pause/Break key to pause a recording session, press it again to continue a recording. The stop sign in the system tray turns yellow when a recording session is paused.

When the stop sign in the system tray is yellow, it is possible to reposition the capture area (but not resize).

Ctrl-Del can still be used at any time to stop and save a recording.

Note: The Pause/Break hotkey can be used to **start** a recording session. You can also assign an alternate record pause hotkey in the [Advanced Options](#).

Copyright © 2003 - 2015 NetPlay Software
Instant Demo is a trademark of NetPlay Software.

NetPlay

Buy Now

Support

Contact Us



NetPlay

Buy Now

Support

Contact Us



Insert Chapter Hotkey

(Professional version only)

You can press the **Alt+C** key to insert a chapter point at any time during your recording. An animated chapter index can be created when exporting your movie to Flash. The chapter points also provide a convenient way of adding bookmarks to your recording, allowing for quick navigation when editing.

More information on Chapters can be found [here](#).

Copyright © 2003 - 2015 NetPlay Software
Instant Demo is a trademark of NetPlay Software.

NetPlay

Buy Now

Support

Contact Us

[NetPlay](#)[Buy Now](#)[Support](#)[Contact Us](#)A yellow speech bubble containing the text "Instant Demo™".

Instant
Demo™

Single Frame Screen Capture

Instant Demo automatically records all screen activity as a continuous movie. It is possible to change this default behavior by using the Windows 'Print Screen' hotkey. When the 'Print Screen' key is pressed, Instant Demo will take a snapshot of the recording region and then enter [record pause](#) mode. You can continue using the 'Print Screen' key to take additional single frame screen shots for your presentation. Use the Pause/Break key to return to normal automatic recording.

Note: The 'Print Screen' hotkey can also be used to **start** a recording session.

Copyright © 2003 - 2015 NetPlay Software
Instant Demo is a trademark of NetPlay Software.

[NetPlay](#)[Buy Now](#)[Support](#)[Contact Us](#)

[NetPlay](#)[Buy Now](#)[Support](#)[Contact Us](#)A yellow speech bubble with a black outline containing the text "Instant Demo™".

**Instant
Demo™**

Hiding the Stop Sign Icon

Type Ctrl-H during recording to hide the 'stop sign' icon in the system tray. Typing Ctrl-H again will make it reappear. The Pause/Break hotkey can still be used to stop and start a recording session when the 'stop sign' icon is hidden.

Copyright © 2003 - 2015 NetPlay Software
Instant Demo is a trademark of NetPlay Software.

[NetPlay](#)[Buy Now](#)[Support](#)[Contact Us](#)

[NetPlay](#)[Buy Now](#)[Support](#)[Contact Us](#)

A yellow speech bubble with a black outline containing the text "Instant Demo™" in black, bold, sans-serif font.

Combine Instant Demo Movies

[Combine - Combine Movies... Ctrl+C]

Use the 'Combine Instant Demo movies...' window to join two or more Instant Demo projects into a single project for editing as a single movie. Click on the '**Add**' button to add a movie to the list of movies to be joined. The movies are combined in the same order as they are presented in the list. Use the '**Up**' and '**Down**' buttons to move the selected movie into a different position. You can also reposition a movie by dragging with the mouse. Use the '**Remove**' button to remove a movie from the list. Use the '**Remove All**' button to remove all movies from the list.

It is also possible to '**Drag and Drop**' Instant Demo project files from another application (such as Windows Explorer) into the list.

Click on the '**Combine**' button to join the selected movies.

Note: When combining movies of different dimensions, the **largest** horizontal and vertical capture size will be used for the combined movie. If a movie was recorded with the '**pan**' feature enabled, then the **smallest** horizontal and vertical capture size will be used. The border color for combined movies of different dimensions is set in the [Effects section](#) of the export options.

Copyright © 2003 - 2015 NetPlay Software
Instant Demo is a trademark of NetPlay Software.

[NetPlay](#)[Buy Now](#)[Support](#)[Contact Us](#)

[NetPlay](#)[Buy Now](#)[Support](#)[Contact Us](#)

A yellow speech bubble containing the text "Instant Demo™" in black.

Maximum recording time and size

Instant Demo uses a 64-bit file structure to store your screen recording. This allows for recordings of up to 18000 Gigabytes in file size. Depending on the nature of the screen activity being recorded, this will allow for continuous recording over several weeks, months or possibly years. The maximum recording period is limited only by the amount of available storage on your computer system. A general rule of thumb for recorded video of typical Windows applications is about 1MB per minute (when exporting your recording to Flash, allow 0.1MB per minute).

Copyright © 2003 - 2015 NetPlay Software
Instant Demo is a trademark of NetPlay Software.

[NetPlay](#)[Buy Now](#)[Support](#)[Contact Us](#)

[NetPlay](#)[Buy Now](#)[Support](#)[Contact Us](#)

Importing video (AVI)

[File - Open Ctrl+O - File of type: Import video file]

Instant Demo can import video as an Instant Demo project file. Click on the 'Edit Demo' button in the Instant Demo recording panel and in the 'Files of type:' section select 'Import video file (*.avi)'. Select your video file and click on 'Open' to commence the import. When the import process completes, you will be asked to save the video as a new Instant Demo project. Your imported video can then be edited and exported to Flash in the usual manner.

Copyright © 2003 - 2015 NetPlay Software
Instant Demo is a trademark of NetPlay Software.

[NetPlay](#)[Buy Now](#)[Support](#)[Contact Us](#)

[NetPlay](#)[Buy Now](#)[Support](#)[Contact Us](#)

The Instant Demo Movie Editor

Click on the **Edit Demo** button to open an existing Instant Demo project or import an AVI file. To import an AVI file change the **Files of type** option in the file open window to 'Import Video File (*.avi)'.



Click on the controls in the above image for more information

Screenshot created with Instant Demo.
(click [here](#) to download the corresponding idemo project)

Copyright © 2003 - 2015 NetPlay Software
Instant Demo is a trademark of NetPlay Software.

[NetPlay](#)[Buy Now](#)[Support](#)[Contact Us](#)



[NetPlay](#)

[Buy Now](#)

[Support](#)

[Contact Us](#)

The Movie Scrollbar

Use this scrollbar to position to any frame in the movie. Clicking on the scrollbar arrows whilst holding down a **Ctrl** key will advance or rewind the movie to the next frame containing a [talk bubble](#) or [hotspot](#). Clicking on the scrollbar arrows whilst holding down a **Shift** key will advance or rewind the movie to the next frame with a recorded mouse click. Clicking on the scrollbar arrows whilst holding down both the **Shift+Ctrl** key will advance or rewind the movie to the next [chapter](#) position.

Clicking on the left or right hand side of the thumb control will advance or rewind the movie to the next frame containing a talk bubble or hotspot, or by ten frames, depending on which occurs first.

Right click on the scrollbar to display a menu containing a history of previously edited frames.



The keyboard **Left** and **Right Arrow** keys (along with the **Alt**, **Ctrl** and/or **Shift** keys) may be used for navigation when the Movie Scrollbar, [Preview](#) or [Studio](#) window has input focus. The **mouse wheel** can also be used to move to the next/previous frame.

When previewing your movie, you can stop at the current frame by clicking anywhere on the scrollbar or by pressing the **Space Bar**.

You can bookmark the current frame by typing **Alt 1-9**. You can return to a bookmarked frame by typing the corresponding **Ctrl 1-9**. You can return to recently edited frames by holding down **Ctrl+Shift** with the **Left** and **Right Arrow** keys.

Copyright © 2003 - 2015 NetPlay Software
Instant Demo is a trademark of NetPlay Software.

[NetPlay](#)

[Buy Now](#)

[Support](#)

[Contact Us](#)



[NetPlay](#)

[Buy Now](#)

[Support](#)

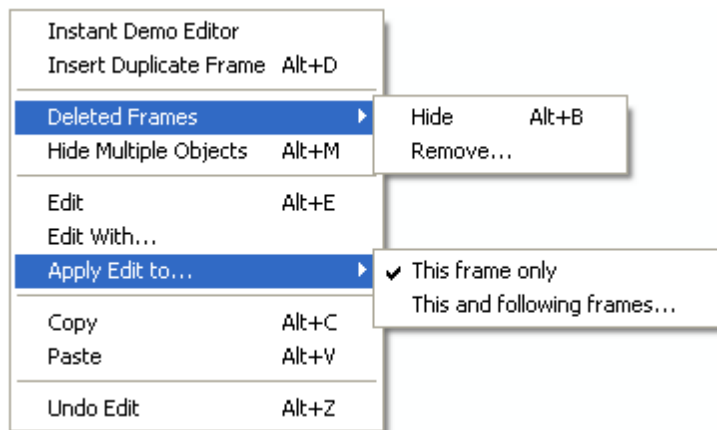
[Contact Us](#)

The Preview Window

This window displays the current movie frame selected via the [Movie Scrollbar](#). Text entered into the [Talk Bubble Editor](#) will also appear in this window using the currently selected font. To reposition the annotated text, press and hold the left mouse button over the text and drag to any desired location within the preview window. If the [Talk Bubble](#) option is checked, press and hold the left mouse button on the edge of the talk bubble to drag out a talk bubble pointer.

To resize your movie, press and hold the left mouse button on the border of the Preview Window and drag to the desired size. The new dimension of the movie will be displayed in the [Size option](#).

Right click anywhere on the preview window to bring up the frame editing menu:



Select **Instant Demo Editor** to set focus back to the editor window (useful if the editor window is hidden by the preview window).

Select **Insert Duplicate Frame** to insert an identical copy of the current frame. This option allows for annotation of more than one area of a captured frame.

Select **Deleted Frames > Hide** to hide (or show) frames that you have deleted from your movie. Hiding deleted frames does not alter the numbering sequence of the non-deleted frames.

Select **Deleted Frames > Remove** to permanently remove frames that you have marked as deleted. Removing deleted frames will alter the numbering sequence of the non-deleted frames.

Select **Hide Multiple Objects** to hide (or show) 'multiple frame' talk bubbles and hotspots that are being displayed in the current frame (this option is available in the professional version only).

Copyright © 2003 - 2015 NetPlay Software
Instant Demo is a trademark of NetPlay Software.

[NetPlay](#)

[Buy Now](#)

[Support](#)

[Contact Us](#)



[NetPlay](#)

[Buy Now](#)

[Support](#)

[Contact Us](#)

The Talk Bubble Editor

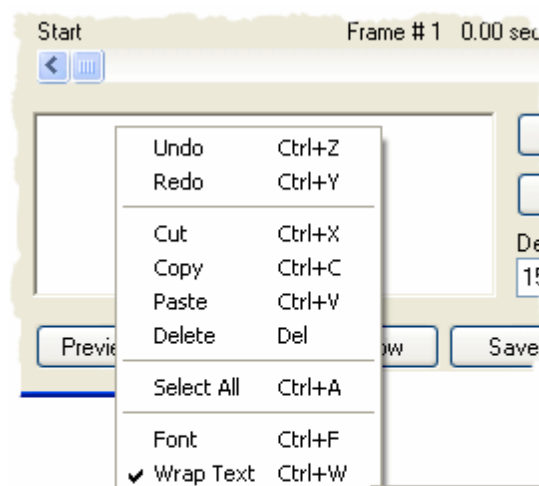
Use this editor to annotate the current movie frame displayed in the [Preview Window](#). When text is entered into the editor, a talk bubble will appear. The talk bubble style can be changed via the [Style](#) button.

Instant Demo automatically justifies your text within a talk bubble. When the **Wrap Text** option is selected (default) you can adjust the width of the edited text by holding down the left mouse button on the left or right hand side of the text editor and dragging the margin in towards the center. This will also change the shape of the talk bubble.

The talk bubble can be repositioned in the [Preview Window](#) by clicking and dragging with the left mouse button.

Right click on the text editor window to select additional editing options such as cut, paste and font selection. Your talk bubble text can also be spoken using Windows [Speech](#). Spell checking is available if an appropriate dictionary is found on your system.

Instant Demo Studio also supports multiple languages per talk bubble. More information can be [found here](#).



Copyright © 2003 - 2015 NetPlay Software
Instant Demo is a trademark of NetPlay Software.

[NetPlay](#)

[Buy Now](#)

[Support](#)

[Contact Us](#)



[NetPlay](#)

[Buy Now](#)

[Support](#)

[Contact Us](#)

Instant Demo Studio

[View - Show Studio]

The Instant Demo Studio is a clip based multiple [eventline](#) editor. You can export from any eventline, allowing you to edit multiple projects all in one window. You can cut, copy and paste clips between eventlines. There is full Undo/Redo support for all clip edits. You can add other .idemo projects to the studio via **File - Add to project... Ctrl+T**.

Most editing functions are available from the main menu or by right clicking on a eventline or clip. You can select multiple clips by left click and drag, or automatically select a group of clips by repeatedly left clicking on a clip.

Gaps between clips are allowed on the eventline. Instant Demo will automatically jump gaps when navigating or exporting.

Studio keyboard shortcuts:

Tab

Jump to next eventline.

Ctrl+Tab

Jump to end of clip / next clip.

Shift+Tab

Jump to beginning of clip / previous clip.

Home / End

Jump to start / end of eventline.

Up / Down / PgUp / PgDn

Scroll studio view up / down.

Ctrl+ Up / Down / PgUp / PgDn / Mouse wheel

Zoom eventline out / in

Shift+ Up / Down / PgUp / PgDn / Mouse wheel

Scroll studio view left / right

Ctrl+ Shift+ Up / Down / PgUp / PgDn / Mouse wheel

Decrease / increase clip height

Mouse wheel

Move to next / previous frame.

Space bar

Stop preview.

The [Movie Scrollbar](#) keyboard shortcuts are also available in the Studio window.

Copyright © 2003 - 2015 NetPlay Software
Instant Demo is a trademark of NetPlay Software.

[NetPlay](#)

[Buy Now](#)

[Support](#)

[Contact Us](#)

[NetPlay](#)[Buy Now](#)[Support](#)[Contact Us](#)A yellow speech bubble with a black outline containing the text "Instant Demo™".

Instant
Demo™

Talk Bubble Editor - Multiple Languages

(Studio version only)

[Main menu - Text - Language]

Instant Demo Studio supports multiple language talk bubbles. This option allows you to manage a multi-language presentation in a single project file. You can set the current language to edit via the main menu or by right clicking in the [Text Editor](#) window and selecting the required language from the Language sub-menu.

You can also add additional languages via the Language sub-menu. Select **Add Language...** and enter a language name or description. The new language will become available in the list of available languages.

This feature is available in the Studio version of Instant Demo only.

Copyright © 2003 - 2015 NetPlay Software
Instant Demo is a trademark of NetPlay Software.

[NetPlay](#)[Buy Now](#)[Support](#)[Contact Us](#)



[NetPlay](#)

[Buy Now](#)

[Support](#)

[Contact Us](#)



Text To Speech

[Text - Speech... Ctrl+E]

Instant Demo supports the Microsoft Text to Speech technology. The callout text in your presentation can be spoken by the default text to speech voice on your computer. To enable speech for your callout text, right click in the editor window and select Speech (or type Ctrl+E) to display the Speech Settings window.

Use Microsoft Speech: Check this option to speak the callout text.


Listen: Click on this button to hear the spoken callout text (or alternate text). You can also [Preview](#) your presentation to hear the result.

Alternate Text to Speech: Alternate spoken text can be entered here. The text entered may contain [XML Text to Speech](#) tags. Use this option to control speech attributes such as pitch, speed, voice, etc. More information on setting these options using XML can be found [here](#).

Insert callout text: Click on this button to insert the callout text into the alternate text editor.

Select voice: Click on this button to change the default voice.

Note: When exporting to Flash or video the speech is captured as a sound file. Text to Speech is not required on the computer used to view your final presentation.

Note on alternate text: The alternate text can be used to narrate your movie without requiring a talk bubble. By default the spoken text will play along with your movie. To pause the movie while the alternate text is being spoken, click on the  button in the Instant Demo editor. This will automatically set the [frame delay](#) to the required duration.

Copyright © 2003 - 2015 NetPlay Software
Instant Demo is a trademark of NetPlay Software.

[NetPlay](#)

[Buy Now](#)

[Support](#)

[Contact Us](#)

[NetPlay](#)[Buy Now](#)[Support](#)[Contact Us](#)

Instant
Demo™

Editing the Recorded Mouse

Instant Demo allows you to edit the original recorded mouse activity, allowing you to make alterations to the mouse actions in your movie. The following demonstration shows how you can alter the recorded mouse:



Copyright © 2003 - 2015 NetPlay Software
Instant Demo is a trademark of NetPlay Software.

[NetPlay](#)[Buy Now](#)[Support](#)[Contact Us](#)

[NetPlay](#)[Buy Now](#)[Support](#)[Contact Us](#)

Instant
Demo™

Chapter Index Headings

(Professional version only)

[Format - Chapter - Add/Edit Chapter Alt+R]

This window allows you to add/edit the chapter index headings of your presentation. When a chapter heading is entered for the current frame, it will be automatically added to the chapter index of your Flash movie. Clicking on the heading in the index will cause the presentation to jump to the current frame and begin playing.

Maximize Chapter List

Check this option to automatically display the chapter list to the viewer. This option has no effect when the chapter list is displayed [outside](#) the Flash presentation.

<-- -->


You can quickly locate frames with chapter headings using the previous chapter (<--) and next chapter (-->) buttons. You can also use **Ctrl+Shift** with the [movie scrollbar](#) to quickly locate chapter positions, or use **Ctrl+Shift** with the keyboard **arrow keys** in the [Preview Window](#).

Click on the [Settings...](#) button to set the font type, size, color and position of the chapter headings.

See also [Advanced Chapter Settings](#) for more information on using chapters.

Copyright © 2003 - 2015 NetPlay Software
Instant Demo is a trademark of NetPlay Software.

[NetPlay](#)[Buy Now](#)[Support](#)[Contact Us](#)

[NetPlay](#)[Buy Now](#)[Support](#)[Contact Us](#)

Instant
Demo™

Zoom and Pan

(Professional version only)

[Format - Zoom - Zoom to Region Alt+X]

[Format - Style... Alt+S - Frame Effects - Zoom to Region]

This effect allows you to zoom into a selected area within your presentation. You can set the zoom region by dragging and resizing the green rectangle in the Preview window. Zooming directly from one zoom region to another is possible. Using two zooms with the same sized area will result in a **Pan** effect.

Additional zoom properties such as following the mouse can be set via the [Zoom Settings...](#) window, or you can use the Instant Demo [TrakMouse](#)™ easy zoom and pan option.

Tips on preparing your movie for the zoom and pan effect can be found [here](#).

Copyright © 2003 - 2015 NetPlay Software
Instant Demo is a trademark of NetPlay Software.

[NetPlay](#)[Buy Now](#)[Support](#)[Contact Us](#)

[NetPlay](#)[Buy Now](#)[Support](#)[Contact Us](#)A yellow speech bubble with a black outline containing the text "Instant Demo™".

**Instant
Demo™**

TrakMouse™ (zoom and pan)

(Professional version only)

[Format - Zoom - TrakMouse Alt+K]

A video of your software in action is an excellent way to demonstrate its features. It provides a hands-on approach without requiring the presence of an instructor or presenter. However, showing a full screen presentation can prove problematic when viewed either in a web browser, or on a lower resolution device such as a PDA or mobile. This requires shrinking the presentation to fit to size, losing valuable detail in the process.

Instant Demo TrakMouse™ technology provides an easy solution. Set the target resolution for the presentation and Instant Demo does the rest. It will automatically zoom the presentation so that menus and text will be at full size and clarity. Instant Demo will then automatically pan the zoomed region to follow the mouse and the action.

Tips on preparing your movie for the zoom and pan effect can be found [here](#).

Copyright © 2003 - 2015 NetPlay Software
Instant Demo is a trademark of NetPlay Software.

[NetPlay](#)[Buy Now](#)[Support](#)[Contact Us](#)



[NetPlay](#)

[Buy Now](#)

[Support](#)

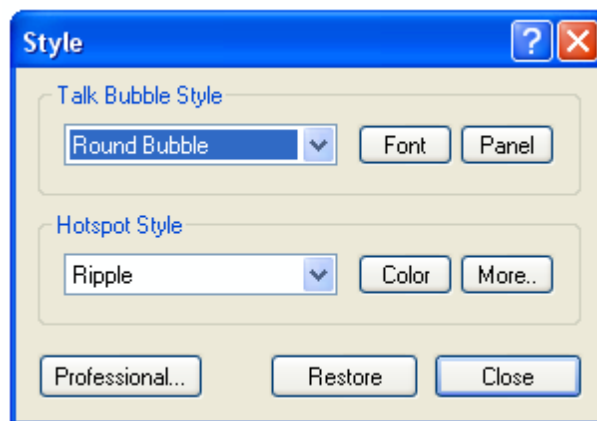
[Contact Us](#)

Instant
Demo™

The Style Button

[Format - Style... Alt+S]

This button will display the Talk Bubble and Hotspot Style Window. This Window provides options to alter the annotated text and hotspot appearances.



Click on the controls in the above image for more information.

Copyright © 2003 - 2015 NetPlay Software
Instant Demo is a trademark of NetPlay Software.

[NetPlay](#)

[Buy Now](#)

[Support](#)

[Contact Us](#)



NetPlay

Buy Now

Support

Contact Us



Talk Bubble Style Selection

[Format - Style... Alt+S]

Use this drop down list to select the style of talk bubble required. The talk bubble appearance will be immediately updated in the [Preview Window](#).

Copyright © 2003 - 2015 NetPlay Software
Instant Demo is a trademark of NetPlay Software.

NetPlay

Buy Now

Support

Contact Us



NetPlay

Buy Now

Support

Contact Us



The Font Button

[Format - Style... Alt+S - Talk Bubble Style]

Click on this button to alter the font and color of the [Talk Bubble](#) text for the currently selected frame. You can also set the [default font](#) for the talk bubble style and apply the current font to [ALL talk bubbles](#) in your movie.

Copyright © 2003 - 2015 NetPlay Software
Instant Demo is a trademark of NetPlay Software.

NetPlay

Buy Now

Support

Contact Us



NetPlay

Buy Now

Support

Contact Us



Talk Bubble Background Color

[Format - Style... Alt+S - Talk Bubble Style - Font - Background]

Click on this button to alter the [Talk Bubble](#) background color for the currently selected frame.

Copyright © 2003 - 2015 NetPlay Software
Instant Demo is a trademark of NetPlay Software.

NetPlay

Buy Now

Support

Contact Us



NetPlay

Buy Now

Support

Contact Us



Hotspot Style Selection

[Format - Style... Alt+S - Hotspot Style]

Use this drop down list to select the style of the hotspot required. The hotspot appearance will be immediately updated in the [Preview Window](#).

Copyright © 2003 - 2015 NetPlay Software
Instant Demo is a trademark of NetPlay Software.

NetPlay

Buy Now

Support

Contact Us



[NetPlay](#)

[Buy Now](#)

[Support](#)

[Contact Us](#)



Hotspot Color

[Format - Style... Alt+S - Hotspot Style]

Click on this button to alter the color of the selected hotspot.

Copyright © 2003 - 2015 NetPlay Software
Instant Demo is a trademark of NetPlay Software.

[NetPlay](#)

[Buy Now](#)

[Support](#)

[Contact Us](#)



[NetPlay](#)

[Buy Now](#)

[Support](#)

[Contact Us](#)



Hotspot Settings

[Format - Style... Alt+S - Hotspot Style - More..]

Click on this button to set additional features for the selected hotspot.

Copyright © 2003 - 2015 NetPlay Software
Instant Demo is a trademark of NetPlay Software.

[NetPlay](#)

[Buy Now](#)

[Support](#)

[Contact Us](#)

[NetPlay](#)[Buy Now](#)[Support](#)[Contact Us](#)A yellow speech bubble with a black outline containing the text "Instant Demo™".

**Instant
Demo™**

Hotspot Position

[Format - Style... Alt+S - Hotspot Style - More..]

This option sets the 'depth' position of the hotspot in relation to the annotated text. When checked, the hotspot will appear in front of the associated talk bubble or text. When unchecked, the hotspot will appear behind the associated talk bubble or text.

Copyright © 2003 - 2015 NetPlay Software
Instant Demo is a trademark of NetPlay Software.

[NetPlay](#)[Buy Now](#)[Support](#)[Contact Us](#)

[NetPlay](#)[Buy Now](#)[Support](#)[Contact Us](#)

Hotspot - Show Mouse

[Format - Style... Alt+S - Hotspot Style - More..]

To avoid confusion, the recorded mouse is by default hidden when an interactive hotspot is displayed. Check the '**Show Mouse**' option to display the recorded mouse with the hotspot.

Copyright © 2003 - 2015 NetPlay Software
Instant Demo is a trademark of NetPlay Software.

[NetPlay](#)[Buy Now](#)[Support](#)[Contact Us](#)



[NetPlay](#)

[Buy Now](#)

[Support](#)

[Contact Us](#)

Instant
Demo™

Hotspot Thickness

[Format - Style... Alt+S - Hotspot Style - More..]

This slide control adjusts the thickness of the **Oval** and **Oblong** style hotspots.

Copyright © 2003 - 2015 NetPlay Software
Instant Demo is a trademark of NetPlay Software.

[NetPlay](#)

[Buy Now](#)

[Support](#)

[Contact Us](#)

[NetPlay](#)[Buy Now](#)[Support](#)[Contact Us](#)

Restore Button

[Format - Style... Alt+S]

Click on this button to restore any changes made to the current frame, hotspot or talk bubble style. Style changes become permanent if you move to another frame, or if you create or save your demo.

Copyright © 2003 - 2015 NetPlay Software
Instant Demo is a trademark of NetPlay Software.

[NetPlay](#)[Buy Now](#)[Support](#)[Contact Us](#)



[NetPlay](#)

[Buy Now](#)

[Support](#)

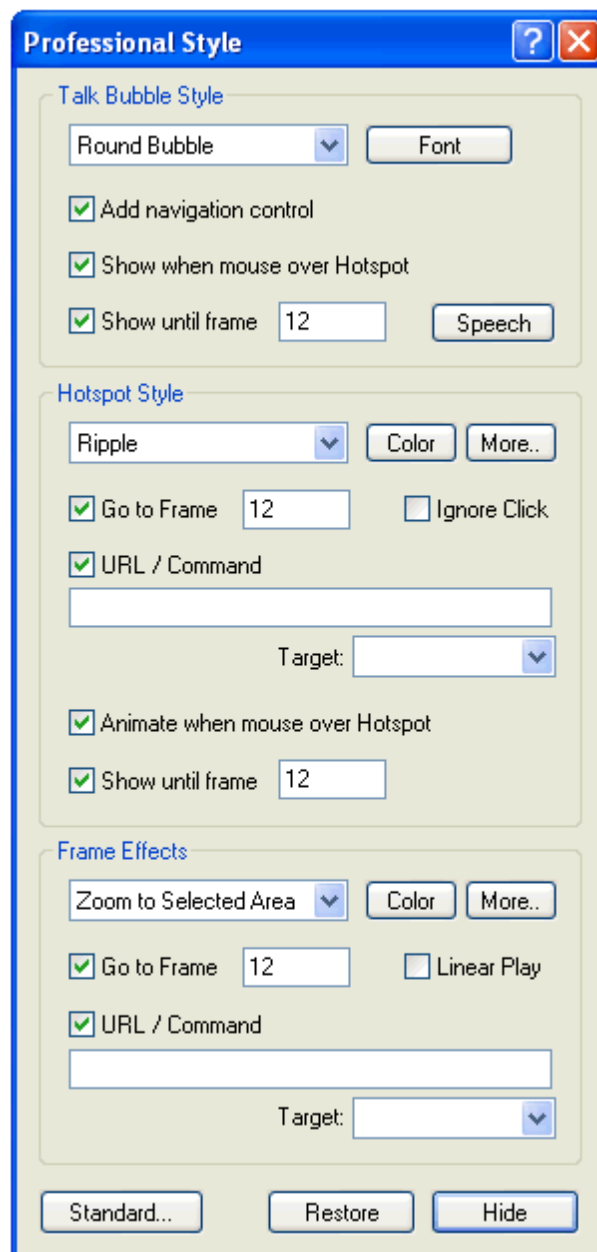
[Contact Us](#)

Professional Style

[Format - Style... Alt+S]

This window provides options to alter the annotated text and hotspot appearances. Professional features also include non-linear playback of your movie, individual frame effects and hotspot hyperlinks. These features are available in the Professional version of Instant Demo only.

Click on the controls in the following image for more information.



Copyright © 2003 - 2015 NetPlay Software
Instant Demo is a trademark of NetPlay Software.

[NetPlay](#)

[Buy Now](#)

[Support](#)

[Contact Us](#)

[NetPlay](#)[Buy Now](#)[Support](#)[Contact Us](#)

Professional Talk Bubble Styles

[Format - Style... Alt+S]

With the professional talk bubble style settings you can display annotated text across multiple frames and display text only when the mouse is moved over an associated hotspot. These styles allow the viewer to explore your demo at their own pace, visually providing information specifically on topics that are of interest to them.

See [Professional Hotspot Styles](#) for more information.

Copyright © 2003 - 2015 NetPlay Software
Instant Demo is a trademark of NetPlay Software.

[NetPlay](#)[Buy Now](#)[Support](#)[Contact Us](#)

[NetPlay](#)[Buy Now](#)[Support](#)[Contact Us](#)A yellow speech bubble with a black outline containing the text "Instant Demo™".

Instant
Demo™

Talk Bubble Navigation Control

[Format - Style... Alt+S - Talk Bubble Style]

Check this option to add a **Back / Next Arrow** button to the [Talk Bubble](#). This option allows the viewer to control the pace of your presentation. The **Back Arrow** button takes the viewer to the previous talk bubble. The **Next Arrow** button skips the remaining talk bubble delay and continues the presentation.

The fast rewind << and fast forward >> buttons in the Flash playback controls will also change their behavior to find the previous / next talk bubble in your presentation.

Copyright © 2003 - 2015 NetPlay Software
Instant Demo is a trademark of NetPlay Software.

[NetPlay](#)[Buy Now](#)[Support](#)[Contact Us](#)

[NetPlay](#)[Buy Now](#)[Support](#)[Contact Us](#)A yellow speech bubble with a black outline containing the text "Instant Demo™".

Instant
Demo™

Talk Bubble Animation Effects

[Format - Style... Alt+S - Talk Bubble Style]

Use this option to apply an animation effect to the talk bubble on the current frame.

Animate In: This effect is applied to the talk bubble when it is first displayed. You can check one or more options to create a combined effect.

Animate Out: This effect is applied when the talk bubble is removed from the display (usually at the end of the current frame display time).

More / Advanced Effect: Advanced features of each effect can be individually adjusted.

Duration: This is the animation duration of the effect in 1/100ths of a second (100 = 1 second animation). The shorter the duration, the faster the animation will be.

Transition: This determines how long each animated step remains on the display (in 1/100ths of a second). A value greater than zero will create a transition effect for the animation.

Save Effect: Use this option to save the current effect settings to a custom name.

Load Effect: Use this option to load a previously saved effect.

Preview: Preview the current effect settings. Click again to stop the preview .

[NetPlay](#)

[Buy Now](#)

[Support](#)

[Contact Us](#)

[NetPlay](#)[Buy Now](#)[Support](#)[Contact Us](#)

Show When Mouse Over Hotspot

[Format - Style... Alt+S - Talk Bubble Style]

Check this option to only display the talk bubble when the mouse is moved over the associated hotspot. The associated hotspot is the hotspot created in the same frame as the talk bubble. This option is disabled if an associated hotspot has not been created.

Copyright © 2003 - 2015 NetPlay Software
Instant Demo is a trademark of NetPlay Software.

[NetPlay](#)[Buy Now](#)[Support](#)[Contact Us](#)

[NetPlay](#)[Buy Now](#)[Support](#)[Contact Us](#)

Show Until frame

[Format - Style... Alt+S - Talk Bubble Style]

Check this option if you want to display the talk bubble over several frames of your demo. The talk bubble will remain visible up to the nominated frame.

Copyright © 2003 - 2015 NetPlay Software
Instant Demo is a trademark of NetPlay Software.

[NetPlay](#)[Buy Now](#)[Support](#)[Contact Us](#)



[NetPlay](#)

[Buy Now](#)

[Support](#)

[Contact Us](#)



Text To Speech

[Text - Speech... Ctrl+E]

Instant Demo supports the Microsoft Text to Speech technology. The callout text in your presentation can be spoken by the default text to speech voice on your computer. To enable speech for your callout text, right click in the editor window and select Speech (or type Ctrl+E) to display the Speech Settings window.

Use Microsoft Speech: Check this option to speak the callout text.


Listen: Click on this button to hear the spoken callout text (or alternate text). You can also [Preview](#) your presentation to hear the result.

Alternate Text to Speech: Alternate spoken text can be entered here. The text entered may contain [XML Text to Speech](#) tags. Use this option to control speech attributes such as pitch, speed, voice, etc. More information on setting these options using XML can be found [here](#).

Insert callout text: Click on this button to insert the callout text into the alternate text editor.

Select voice: Click on this button to change the default voice.

Note: When exporting to Flash or video the speech is captured as a sound file. Text to Speech is not required on the computer used to view your final presentation.

Note on alternate text: The alternate text can be used to narrate your movie without requiring a talk bubble. By default the spoken text will play along with your movie. To pause the movie while the alternate text is being spoken, click on the  button in the Instant Demo editor. This will automatically set the [frame delay](#) to the required duration.

Copyright © 2003 - 2015 NetPlay Software
Instant Demo is a trademark of NetPlay Software.

[NetPlay](#)

[Buy Now](#)

[Support](#)

[Contact Us](#)

[NetPlay](#)[Buy Now](#)[Support](#)[Contact Us](#)A yellow speech bubble with a black outline containing the text "Instant Demo™".

**Instant
Demo™**

Advanced Talk Bubble Options

[Format - Style... Alt+S - Talk Bubble Style - Advanced]

The following attributes can be assigned to the talk bubble using the Advanced Talk Bubble Options:

Can Be Edited

This option allows the viewer to enter new text or alter the existing text in the talk bubble. The information entered is for simulation purposes only. This option can be used in a demonstration to add a level of realism to the presentation.

Show As Password

Any text shown or entered into the talk bubble will be replaced by asterisks.

Copyright © 2003 - 2015 NetPlay Software
Instant Demo is a trademark of NetPlay Software.

[NetPlay](#)[Buy Now](#)[Support](#)[Contact Us](#)



NetPlay

Buy Now

Support

Contact Us

Instant
Demo™

Professional Hotspot Styles

[Format - Style... Alt+S]

With the professional hotspot style settings you can increase the level of interactivity with the viewer. Hotspot hyperlinks to other web pages or to other frames within the same demo allow you to give the viewer full control over their learning experience. You can also set up question and answer type demos or even add multiple choice scenarios.

Here is an example of a multiple choice demo:



(click [here](#) to download the corresponding idemo project)

Copyright © 2003 - 2015 NetPlay Software
Instant Demo is a trademark of NetPlay Software.

[NetPlay](#)

[Buy Now](#)

[Support](#)

[Contact Us](#)

[NetPlay](#)[Buy Now](#)[Support](#)[Contact Us](#)

Ignore Mouse Click

[Format - Style... Alt+S - Hotspot Style]

Check this option to disable mouse input for the hotspot. This feature allows you to use the hotspot styles for visual effects only.

Copyright © 2003 - 2015 NetPlay Software
Instant Demo is a trademark of NetPlay Software.

[NetPlay](#)[Buy Now](#)[Support](#)[Contact Us](#)

[NetPlay](#)[Buy Now](#)[Support](#)[Contact Us](#)A yellow speech bubble with a black outline containing the text "Instant Demo™".

**Instant
Demo™**

Go To Frame

[Format - Style... Alt+S - Hotspot Style]

Check this option to set a target frame for the hotspot. If a viewer clicks on the hotspot, then the demo will continue playing from the nominated frame. Entering frame number zero (or the word 'Stop') will pause the playback of your demonstration when the viewer clicks on the hotspot. This is useful if your hotspot links to a URL that opens in another web browser, thus allowing the viewer to return to your demonstration at a later time and continue viewing from the same position.

Copyright © 2003 - 2015 NetPlay Software
Instant Demo is a trademark of NetPlay Software.

[NetPlay](#)[Buy Now](#)[Support](#)[Contact Us](#)

[NetPlay](#)[Buy Now](#)[Support](#)[Contact Us](#)Instant Demo™

Hotspot URL

[Format - Style... Alt+S - Hotspot Style]

This option enables your demo to open a web page or load a new demo when the mouse is clicked on the hotspot. The URL can be of any type, including an HTML file, an image or another Flash movie. If your demo is playing in a web browser, the URL will be displayed in the window or frame specified by the Target. You can select a target from the drop down list, or enter your own target string. The target name “_level0” can be used to load another demo (or any other Flash movie) into the same Flash window, replacing the current demo. The target name “_level1” can be used to place another Flash movie over the current demo. If a “_level1” demo has any transparent regions, then the original demo will show through from underneath.

If you plan to use the Adobe Flash projector for your demo, then you can also use the FSCommand action in the URL and Target fields. For example, to instruct the projector to go to full screen mode do the following:

In the 'URL / Command' field type 'fscommand:fullscreen' and in the 'Target' field type 'true'. You can find out more about the Adobe FSCommand on the [Adobe web site](#).

The URL can be tested within Instant Demo by holding down a **Ctrl** key and left clicking on the hotspot when previewing your movie.

Copyright © 2003 - 2015 NetPlay Software
Instant Demo is a trademark of NetPlay Software.

[NetPlay](#)[Buy Now](#)[Support](#)[Contact Us](#)



[NetPlay](#)

[Buy Now](#)

[Support](#)

[Contact Us](#)



Animate When Mouse Over Hotspot

[Format - Style... Alt+S - Hotspot Style]

Check this option to display the hotspot only when the mouse is moved over the associated hotspot region.

Copyright © 2003 - 2015 NetPlay Software
Instant Demo is a trademark of NetPlay Software.

[NetPlay](#)

[Buy Now](#)

[Support](#)

[Contact Us](#)

[NetPlay](#)[Buy Now](#)[Support](#)[Contact Us](#)

Show Until frame

[Format - Style... Alt+S - Hotspot Style]

Check this option if you want to display the hotspot over several frames of your demo. The hotspot will remain visible and active up to the nominated frame. If a viewer clicks on the hotspot, then the demo will jump to the frame immediately after the nominated frame.

Copyright © 2003 - 2015 NetPlay Software
Instant Demo is a trademark of NetPlay Software.

[NetPlay](#)[Buy Now](#)[Support](#)[Contact Us](#)

[NetPlay](#)[Buy Now](#)[Support](#)[Contact Us](#)

Hotspot Image

[Format - Style... Alt+S - Hotspot Style - Image]

Use this style to add an image such as a company logo or watermark to your demonstration. The image can be assigned a fade in/out duration and an applied transparency value. This hotspot style is available in the Professional version only of Instant Demo.

Copyright © 2003 - 2015 NetPlay Software
Instant Demo is a trademark of NetPlay Software.

[NetPlay](#)[Buy Now](#)[Support](#)[Contact Us](#)

[NetPlay](#)[Buy Now](#)[Support](#)[Contact Us](#)

Hotspot - Select Image

[Format - Style... Alt+S - Hotspot Style - Image - More..]

Use this option to assign an image to the hotspot. Enter the full path name to the image file or use the 'Browse' button to select the file. Instant Demo supports a wide range of image formats.

Copyright © 2003 - 2015 NetPlay Software
Instant Demo is a trademark of NetPlay Software.

[NetPlay](#)[Buy Now](#)[Support](#)[Contact Us](#)

[NetPlay](#)[Buy Now](#)[Support](#)[Contact Us](#)

**Instant
Demo™**

Hotspot - Image Size

[Format - Style... Alt+S - Hotspot Style - Image - More..]

Check the 'Lock aspect ratio' option to preserve the relative width and height of the original image when resizing in the preview window. Use the drop down list to set the hotspot image to a percentage of the original size.

Copyright © 2003 - 2015 NetPlay Software
Instant Demo is a trademark of NetPlay Software.

[NetPlay](#)[Buy Now](#)[Support](#)[Contact Us](#)

[NetPlay](#)[Buy Now](#)[Support](#)[Contact Us](#)

Hotspot - Image Fade

[Format - Style... Alt+S - Hotspot Style - Image - More..]

Use this option to set the Fade-In and Fade-Out duration of the Hotspot Image.
The fade duration is given in one hundredths of a second.

Copyright © 2003 - 2015 NetPlay Software
Instant Demo is a trademark of NetPlay Software.

[NetPlay](#)[Buy Now](#)[Support](#)[Contact Us](#)

[NetPlay](#)[Buy Now](#)[Support](#)[Contact Us](#)

Hotspot Flash Movie

[Format - Style... Alt+S - Hotspot Style - Flash Movie]

Use this style to add a Flash movie (swf) file to your demonstration. The Flash movie can be scaled in the vertical and horizontal and can have an applied transparency value. This hotspot style is available in the Professional version only of Instant Demo.

Copyright © 2003 - 2015 NetPlay Software
Instant Demo is a trademark of NetPlay Software.

[NetPlay](#)[Buy Now](#)[Support](#)[Contact Us](#)

[NetPlay](#)[Buy Now](#)[Support](#)[Contact Us](#)

A yellow speech bubble containing the text "Instant Demo" in a bold, black font.

Flash Hotspot URL

[Format - Style... Alt+S - Hotspot Style - Flash Movie - More..]

Use this option to assign a Flash movie to the hotspot. You can enter the path name or URL to the movie file, or use the 'Browse' button to select the file. To preserve streaming playback of your Instant Demo movie in a web browser, the hotspot Flash file (swf) is **not** embedded into the Instant Demo flash presentation. The file path or URL specified must be available when presenting in a web browser.

You can place the hotspot Flash file into the executable version of your presentation when the [Instant Demo Flash player](#) is used. To do this place the hotspot Flash file into the same target directory as your presentation output file and set the URL to just the name of your hotspot Flash file (include the .swf file extension).

Note: The hotspot Flash movie is not displayed in the Instant Demo preview.

Copyright © 2003 - 2015 NetPlay Software
Instant Demo is a trademark of NetPlay Software.

[NetPlay](#)[Buy Now](#)[Support](#)[Contact Us](#)

[NetPlay](#)[Buy Now](#)[Support](#)[Contact Us](#)

Flash Hotspot Scale

[Format - Style... Alt+S - Hotspot Style - Flash Movie - More..]

These options set the vertical and horizontal scaling (as a percentage) of your Flash hotspot movie.

Copyright © 2003 - 2015 NetPlay Software
Instant Demo is a trademark of NetPlay Software.

[NetPlay](#)[Buy Now](#)[Support](#)[Contact Us](#)



NetPlay

Buy Now

Support

Contact Us



Professional Frame Effects

[Format - Style... Alt+S]

With the professional frame style settings you can add special frame effects and provide non-linear playback of your demonstrations.

See [Professional Hotspot Styles](#) for an example demonstration using frame effects.

Copyright © 2003 - 2015 NetPlay Software
Instant Demo is a trademark of NetPlay Software.

NetPlay

Buy Now

Support

Contact Us



[NetPlay](#)

[Buy Now](#)

[Support](#)

[Contact Us](#)

Frame Effects

[Format - Style... Alt+S - Frame Effects]

Use this drop down list to select the following frame effects:

None: No effect will be applied to this frame.

Fade in/out: Use this effect to fade the frame to or from a designated color. The designated color can be chosen using the 'More..' button.

Sweeping highlight: Use this effect to create an animated highlight for the selected frame.

Cross fade: Use this effect to dissolve the current frame into the next frame. The duration of the fade can be set via the 'More..' button.

Transitional Fades Start: This effect is similar to a cross fade, however it is applied to all subsequent frames until a 'Transitional Fades Stop' is encountered. The duration of the transitional fade can be set via the 'More..' button. A small duration will create a motion blur style effect. A longer duration can be used to simulate the fading in/out of menu items, popup windows, etc.

Note: the **Transitional Fades** effect is only rendered in the Flash output.

Transitional Fades Stop: Turns off Transitional Fades.

Zoom to Region: This effect allows you to zoom into a selected area within your presentation. You can set the zoom region by dragging and resizing the green rectangle in the Preview window. The zoom region can also automatically follow the mouse. To enable automatic panning click on the [More..](#) button next to the selected Frame Effect and check the Follow Mouse option.

Zoom Out: Turns off the zoom region.

Note: Zooming directly from one zoom region to another is possible. Using two zooms with the same sized area will result in a **Pan** effect.

[NetPlay](#)

[Buy Now](#)

[Support](#)

[Contact Us](#)



[NetPlay](#)

[Buy Now](#)

[Support](#)

[Contact Us](#)



Frame Effect Color

[Format - Style... Alt+S - Frame Effects]

Click on this button to alter the color of the selected frame effect.

Copyright © 2003 - 2015 NetPlay Software
Instant Demo is a trademark of NetPlay Software.

[NetPlay](#)

[Buy Now](#)

[Support](#)

[Contact Us](#)



[NetPlay](#)

[Buy Now](#)

[Support](#)

[Contact Us](#)



Frame Effect Settings

[Format - Style... Alt+S - Frame Effects - More..]

Click on this button to alter any settings associated with a frame effect.

Copyright © 2003 - 2015 NetPlay Software
Instant Demo is a trademark of NetPlay Software.

[NetPlay](#)

[Buy Now](#)

[Support](#)

[Contact Us](#)

[NetPlay](#)[Buy Now](#)[Support](#)[Contact Us](#)A yellow speech bubble with a black outline containing the text "Instant Demo™".

Instant
Demo™

Effect Duration

[Format - Style... Alt+S - Frame Effects - More..]

This option sets the duration of the frame effect. The duration is set in hundredths (1/100) of a second. A small value will produce a quick visual effect and a larger value will produce a slower visual effect.

Note: for the 'Transitional Fade' effect, this setting will not alter the current frame delay.

Copyright © 2003 - 2015 NetPlay Software
Instant Demo is a trademark of NetPlay Software.

[NetPlay](#)[Buy Now](#)[Support](#)[Contact Us](#)

[NetPlay](#)[Buy Now](#)[Support](#)[Contact Us](#)Instant
Demo™

Zoom Effect Settings

(Professional version only)

[Format - Zoom - Zoom Settings...]

[Format - Style... Alt+S - Frame Effects - Zoom to Region - More..]

The following additional options are available for the Zoom to Region effect:

Follow Mouse: Check this option to automatically pan the zoom region with the recorded mouse activity. You can modify the default pan behavior at any time by inserting addition Zoom to Region effects.

Cut to Zoom Region: Check this option to cut directly to the selected viewing region without performing a transitional zoom or pan.

Zoom to Export Size: Check this option to set the zoom region to the same dimension as the final export size of your presentation. Zooming to the final export size will result in a true size 'window' into your presentation, providing a sharp clear image of your original presentation. Click on the **Settings** button next to this option to set the final [export size](#) of your presentation.

Zoom to 200%: Check this option to set the zoom region to 200%.

Note: You must click on the OK button to apply the new zoom region settings.

Copyright © 2003 - 2015 NetPlay Software
Instant Demo is a trademark of NetPlay Software.

[NetPlay](#)[Buy Now](#)[Support](#)[Contact Us](#)

[NetPlay](#)[Buy Now](#)[Support](#)[Contact Us](#)

A yellow speech bubble button with the text "Instant Demo™" inside.

Go To Frame

[Format - Style... Alt+S - Frame Effects]

Check this option to alter the playback sequence of your demo. After displaying the current frame, the demo will automatically continue playing from the nominated frame. Entering frame number zero (or the word 'Stop') will pause the playback of your demonstration. This is useful if your frame links to a URL that opens in another web browser, thus allowing the viewer to return to your demonstration at a later time and continue viewing from the same position.

Go To Frame can also be used to alter the creation order of your project when using the [Linear Play](#) option.

Copyright © 2003 - 2015 NetPlay Software
Instant Demo is a trademark of NetPlay Software.

[NetPlay](#)[Buy Now](#)[Support](#)[Contact Us](#)

[NetPlay](#)[Buy Now](#)[Support](#)[Contact Us](#)A yellow speech bubble containing the text "Instant Demo" in black, with a trademark symbol (TM) next to "Demo".

Instant
Demo™

Linear Play

[Format - Style... Alt+S - Frame Effects]

Check this option to maintain linear playback of your Flash movie when using the [Go To Frame](#) option. This option ensures that your Flash presentation will stream over an Internet connection using the new play sequence. The scrollbar in the Flash playback controls will also move continuously from left to right when viewing (it will not jump back and forth).

This option can be used to alter the order of your presentation without needing to split and re-combine your Instant Demo recording. When Linear Play is checked, entering Stop (or frame zero) in the [Go To Frame](#) field will also finalize your presentation.

Copyright © 2003 - 2015 NetPlay Software
Instant Demo is a trademark of NetPlay Software.

[NetPlay](#)[Buy Now](#)[Support](#)[Contact Us](#)

[NetPlay](#)[Buy Now](#)[Support](#)[Contact Us](#)

Instant
Demo™

Frame URL

[Format - Style... Alt+S - Frame Effects]

This option enables your demo to open a web page or load a new demo once the current frame is displayed. The URL can be of any type, including an HTML file, an image or another Flash movie. If your demo is playing in a web browser, the URL will be displayed in the window or frame specified by the Target. You can select a target from the drop down list, or enter your own target string. The target name “_level0” can be used to load another demo (or any other Flash movie) into the same Flash window, replacing the current demo. The target name “_level1” can be used to place another Flash movie over the current demo. If a “_level1” demo has any transparent regions, then the original demo will show through from underneath.

If you plan to use the Adobe Flash projector for your demo, then you can also use the FSCommand action in the URL and Target fields. For example, to instruct the projector to go to full screen mode do the following:

In the 'URL / Command' field type 'fscommand:fullscreen' and in the 'Target' field type 'true'. You can find out more about the Adobe FSCommand on the [Adobe web site](#).

Frame URL's are active in your created Flash movie only, they are ignored when previewed in Instant Demo.

Copyright © 2003 - 2015 NetPlay Software
Instant Demo is a trademark of NetPlay Software.

[NetPlay](#)[Buy Now](#)[Support](#)[Contact Us](#)

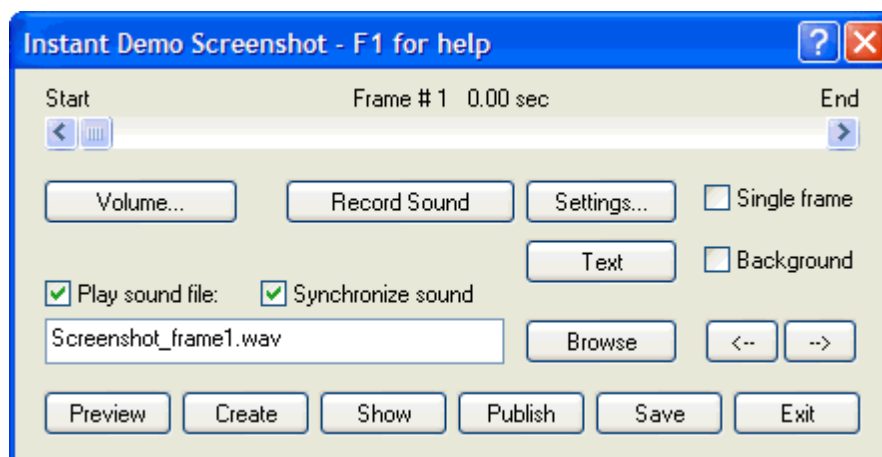
[NetPlay](#)[Buy Now](#)[Support](#)[Contact Us](#)

Sound / Text Button

[Instant Demo Editor]

Use the Sound / Text button to switch the editing control panel between [text annotation](#) and [sound editing](#) views.

Click on the sound controls in the following image for more information.



Copyright © 2003 - 2015 NetPlay Software
Instant Demo is a trademark of NetPlay Software.

[NetPlay](#)[Buy Now](#)[Support](#)[Contact Us](#)



[NetPlay](#)

[Buy Now](#)

[Support](#)

[Contact Us](#)



Sound Volume...

[Format - Sound volume... Alt+Q]

Click on this button to adjust the playback settings (volume, noise reduction and silence detection) of your [nominated](#) sound file.

Copyright © 2003 - 2015 NetPlay Software
Instant Demo is a trademark of NetPlay Software.

[NetPlay](#)

[Buy Now](#)

[Support](#)

[Contact Us](#)

[NetPlay](#)[Buy Now](#)[Support](#)[Contact Us](#)

A yellow speech bubble button with the text "Instant Demo™" inside.

Play sound

[Format - Sound volume... Alt+Q]

Use this button to start or stop playing the [nominated](#) sound recording. When playing, you can use the Noise, Silence and Volume slide controls to interactively alter the quality of your sound.

Copyright © 2003 - 2015 NetPlay Software
Instant Demo is a trademark of NetPlay Software.

[NetPlay](#)[Buy Now](#)[Support](#)[Contact Us](#)

[NetPlay](#)[Buy Now](#)[Support](#)[Contact Us](#)

Sound Profile / Remove Noise

[Format - Sound volume... Alt+Q]

Use this button to create a new sound profile for the [nominated](#) sound recording. Once a sound profile is created, the 'Noise' slide control can be used to adjust the amount of noise removed from your sound recording.

Copyright © 2003 - 2015 NetPlay Software
Instant Demo is a trademark of NetPlay Software.

[NetPlay](#)[Buy Now](#)[Support](#)[Contact Us](#)



[NetPlay](#)

[Buy Now](#)

[Support](#)

[Contact Us](#)



Sound Volume

[Format - Sound volume... Alt+Q]

This slide control sets the playback volume for the [nominated](#) sound recording.

Copyright © 2003 - 2015 NetPlay Software
Instant Demo is a trademark of NetPlay Software.

[NetPlay](#)

[Buy Now](#)

[Support](#)

[Contact Us](#)

[NetPlay](#)[Buy Now](#)[Support](#)[Contact Us](#)A yellow speech bubble with a black outline containing the text "Instant Demo™".

**Instant
Demo™**

Volume Automatic Gain

[Format - Sound volume... Alt+Q]

Check this option to apply automatic gain to the sound file being played. If the sound file is varying in volume, or is a lot quieter than your other sound files, then check this option to ensure the sound uses the full dynamic range of the audio output format.

Copyright © 2003 - 2015 NetPlay Software
Instant Demo is a trademark of NetPlay Software.

[NetPlay](#)[Buy Now](#)[Support](#)[Contact Us](#)

[NetPlay](#)[Buy Now](#)[Support](#)[Contact Us](#)

A yellow speech bubble containing the text "Instant Demo™" in black, bold, sans-serif font.

Background Sound Settings

[Format - Sound volume... Alt+Q - Background...]

Fade Background Volume

Instant Demo automatically raises/lowers the background volume for periods of silence/non-silence in the main soundtrack. This slide control sets the relative background volume used for periods of non-silence. Set to minimum for complete silencing of the background sound, or set to maximum if you do not wish to lower the background volume.

Synchronize to end of demo

When checked, Instant Demo will synchronize the end of your background sound to the end of your presentation (or next frame with a nominated background sound). This option ensures a professional ending to your presentation without the need to edit the length of your background sound.

Note: this option is only available if the [nominated](#) sound file is set as [Background](#) (Professional version only).

Copyright © 2003 - 2015 NetPlay Software
Instant Demo is a trademark of NetPlay Software.

[NetPlay](#)[Buy Now](#)[Support](#)[Contact Us](#)

[NetPlay](#)[Buy Now](#)[Support](#)[Contact Us](#)A yellow speech bubble with a black outline containing the text "Instant Demo™".

Instant
Demo™

Noise

[Format - Sound volume... Alt+Q]

This slide control determines how much noise is present in the [nominated](#) sound recording.

The slider can be moved whilst listening to your sound recording (using the 'Play sound' button). If the sound has a lot of background hiss or hum, then move the slider to the left (less). If the sound is distorted or seems unnatural, then move the slider to the right (more).

Instant Demo uses a frequency analysis technique to create a 'noise profile' of your original sound recording. If you are unable to find a satisfactory sound quality using the Noise slider, then you may wish to create a new noise profile with a different level of noise detection. You can create a new noise profile using the 'Create noise profile' button.

Note: this option is only available if a noise profile exists for the nominated sound file.

Copyright © 2003 - 2015 NetPlay Software
Instant Demo is a trademark of NetPlay Software.

[NetPlay](#)[Buy Now](#)[Support](#)[Contact Us](#)

[NetPlay](#)[Buy Now](#)[Support](#)[Contact Us](#)A yellow speech bubble with a black outline containing the text "Instant Demo™".

**Instant
Demo™**

Silence

[Format - Sound volume... Alt+Q]

This slide control sets the silence detection threshold for the [nominated](#) sound recording. Instant Demo can automatically set the volume to zero for silent passages in your sound recording. This technique improves the quality of your sound by removing all noise when silence is detected and also reduces the final file size of your demonstration.

The slider can be moved whilst listening to your sound source (using the 'Play sound' button). If noise can be heard in the silent passages of your sound, then move the slider to the right (more). If the sound is 'choppy' or the beginning or end of spoken words are cut-off, then move the slider to the left (less).

Copyright © 2003 - 2015 NetPlay Software
Instant Demo is a trademark of NetPlay Software.

[NetPlay](#)[Buy Now](#)[Support](#)[Contact Us](#)

[NetPlay](#)[Buy Now](#)[Support](#)[Contact Us](#)A yellow speech bubble containing the text "Instant Demo™".

Instant
Demo™

Record Sound

[Format - View Sound Alt+T]

Click on the 'Record' button to commence recording sound for your demo. The device used to record sound is selected via the '[Recording options...](#)' button. If the '[Single Frame](#)' option is unchecked, then Instant Demo will begin to preview your movie, allowing you to synchronize the recording with your edited demo. Click on the 'Stop rec.' button to stop your recording. The recorded sound file is then saved under a [nominated](#) file name.

When recording across multiple frames, Instant Demo will automatically pause the recording for any frame containing a hotspot. Recording automatically resumes when the demo proceeds to the next frame.

Copyright © 2003 - 2015 NetPlay Software
Instant Demo is a trademark of NetPlay Software.

[NetPlay](#)[Buy Now](#)[Support](#)[Contact Us](#)

[NetPlay](#)[Buy Now](#)[Support](#)[Contact Us](#)

Sound recording settings...

[Format - View Sound Alt+T]

Click on this button to select the sound recording device and noise reduction options. The default sound source is the microphone input to your computer.

Copyright © 2003 - 2015 NetPlay Software
Instant Demo is a trademark of NetPlay Software.

[NetPlay](#)[Buy Now](#)[Support](#)[Contact Us](#)

[NetPlay](#)[Buy Now](#)[Support](#)[Contact Us](#)A yellow speech bubble with a black outline containing the text "Instant Demo™".

**Instant
Demo™**

Single Frame

[Format - View Sound Alt+T]

When checked, the [nominated](#) sound recording will be played against the current frame only. This means that your movie will pause on this frame during playback until the recorded sound has been played. When unchecked, the sound recording will be played over subsequent frames of your movie until the recording finishes or until another frame with a nominated sound recording is encountered.

Copyright © 2003 - 2015 NetPlay Software
Instant Demo is a trademark of NetPlay Software.

[NetPlay](#)[Buy Now](#)[Support](#)[Contact Us](#)

[NetPlay](#)[Buy Now](#)[Support](#)[Contact Us](#)A yellow speech bubble containing the text "Instant Demo" in black, with a small trademark symbol (TM) after "Demo".

Instant
Demo™

Background Sound

[Format - View Sound Alt+T]

When **Background** is checked, the [nominated](#) sound recording will be played in the background against the other sound files in your presentation. Instant Demo also automatically raises and lowers the volume of a background sound for periods of silence/non-silence in the main soundtrack. You can alter this behavior using the [background volume](#) control (Alt+Q).

Check the **Loop** option to automatically repeat the background sound throughout your presentation.

Note: these options are available in the Professional version of Instant Demo only.

Copyright © 2003 - 2015 NetPlay Software
Instant Demo is a trademark of NetPlay Software.

[NetPlay](#)[Buy Now](#)[Support](#)[Contact Us](#)

[NetPlay](#)[Buy Now](#)[Support](#)[Contact Us](#)A yellow speech bubble with a black outline containing the text "Instant Demo™".

**Instant
Demo™**

Nominated Sound Recording

[Format - View Sound Alt+T]

This edit field nominates the sound file to be played with the current frame (or frames) of your demo. Use the 'Browse' button to select a pre-recorded sound file, or use the '[Record](#)' button to create a new sound recording.

Instant Demo supports all major sound formats including WAV, WMA, MP3, MIDI, OGG, FLAC, AC3 and many other minor formats.

The [Single frame](#) and [Background](#) options determines how the nominated file will be replayed.

Uncheck the 'Play Sound File:' option to disable a nominated sound recording.

Copyright © 2003 - 2015 NetPlay Software
Instant Demo is a trademark of NetPlay Software.

[NetPlay](#)[Buy Now](#)[Support](#)[Contact Us](#)

[NetPlay](#)[Buy Now](#)[Support](#)[Contact Us](#)

A yellow speech bubble containing the text "Instant Demo" in a bold, black font. The speech bubble has a small tail pointing towards the bottom left.

Synchronize sound

[Format - View Sound Alt+T]

This option is enabled when a sound file is synchronized to your movie. A synchronized sound file is created when you nominate to capture live sound with your screen recording. A synchronized sound file can also be created during editing by recording a sound track with the '[Single Frame](#)' option unchecked. When the 'Synchronize sound' option is checked, Instant Demo will automatically ensure that your sound track is always synchronized with your movie, regardless of any subsequent editing actions (such as deleting frames).

Copyright © 2003 - 2015 NetPlay Software
Instant Demo is a trademark of NetPlay Software.

[NetPlay](#)[Buy Now](#)[Support](#)[Contact Us](#)



NetPlay

Buy Now



Support

Contact Us



Go To Previous/Next Sound

[Format - View Sound Alt+T]

Click on these buttons   to move to the previous/next frame that contains a [nominated](#) sound recording.

Copyright © 2003 - 2015 NetPlay Software
Instant Demo is a trademark of NetPlay Software.

NetPlay

Buy Now

Support

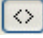
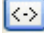
Contact Us

[NetPlay](#)[Buy Now](#)[Support](#)[Contact Us](#)

The Delete Option

[Instant Demo Editor]

Check this option to exclude the current frame from a [created](#) Flash movie.

To exclude a range of frames, check the delete option for the starting frame and then click on the range button . Position the movie [scrollbar](#) to the last frame in the range and release the range button  by clicking on it again.

You can un-delete frames with same process when the delete option is un-checked.

Note: You must click on the range button after making your selection to apply your deletion (or un-deletion).

Copyright © 2003 - 2015 NetPlay Software
Instant Demo is a trademark of NetPlay Software.


[NetPlay](#)[Buy Now](#)[Support](#)[Contact Us](#)

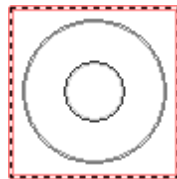
[NetPlay](#)[Buy Now](#)[Support](#)[Contact Us](#)

Instant
Demo™

The Hotspot Option

[Instant Demo Editor]

Check this option to add an interactive hotspot to your movie. You can change the appearance of the hotspot via the [Style Button](#). The default hotspot behaviour is to pause your movie until the viewer clicks on the hotspot with the left mouse button. You can change this behaviour by clicking on the  button or by entering your own [frame delay](#) value.



A hotspot can be resized and repositioned in the [Preview Window](#). Press and hold the left mouse button on the red border to resize. Press and hold the left mouse button inside the red border to reposition.

Hotspots can be used to create interactive demos and tutorials.

Copyright © 2003 - 2015 NetPlay Software
Instant Demo is a trademark of NetPlay Software.


[NetPlay](#)[Buy Now](#)[Support](#)[Contact Us](#)

[NetPlay](#)[Buy Now](#)[Support](#)[Contact Us](#)


Frame Delay

[Instant Demo Editor]

Use this option to set the display duration of the current frame for your movie. The delay is given in one hundredths of a second. For example to display the frame for 2 seconds enter a value of 200.

Instant Demo automatically adjusts the delay when you enter text into a [Talk Bubble](#). You can override the default delay by manually entering your own delay value. Use the calculate  button to reset the delay to the frame default.



Click the calculate  button with the right mouse button to set (or reset) the delay across multiple frames. See the above demonstration for more information.

Copyright © 2003 - 2015 NetPlay Software
Instant Demo is a trademark of NetPlay Software.

[NetPlay](#)[Buy Now](#)[Support](#)[Contact Us](#)

[NetPlay](#)[Buy Now](#)[Support](#)[Contact Us](#)A yellow speech bubble containing the text "Instant Demo™".

Instant
Demo™

Preview Size

[Instant Demo Editor]

Use this option to set the preview size of your movie in increments of 10 percent.

You can also adjust the size of the preview display by resizing the [Preview Window](#). Press and hold the left mouse button on the border of the Preview Window to resize. The new dimension of the movie will be displayed in the Preview Size option.

Note: This option is primarily used to set a comfortable preview size for editing purposes. Use the [Html tab](#) in the [Flash export](#) settings window to set the final export size of your presentation.

Copyright © 2003 - 2015 NetPlay Software
Instant Demo is a trademark of NetPlay Software.

[NetPlay](#)[Buy Now](#)[Support](#)[Contact Us](#)

[NetPlay](#)[Buy Now](#)[Support](#)[Contact Us](#)

A yellow speech bubble button with the text "Instant Demo™" inside.

The Preview Button

[View - Preview Alt+P]

Press this button to watch an immediate preview of your edited movie in the [Preview Window](#). The preview will commence from the currently selected frame. While previewing your movie, the **left** and **right arrow** keys can be used to skip to the next frame (ideal for moving quickly through frames with a large amount of text). The **space bar** can be used to stop the preview on the current frame.

Copyright © 2003 - 2015 NetPlay Software
Instant Demo is a trademark of NetPlay Software.

[NetPlay](#)[Buy Now](#)[Support](#)[Contact Us](#)



NetPlay

Buy Now

Support

Contact Us



The Create Movie Button

[Create - Create options... Alt+O]

Click on this button to create your Instant Demo movie. You will be prompted with several creation options such as export format (Flash, YouTube, AVI, MP4, etc) and quality (small file size or appearance). Click on the 'Create Demo' button to export to your desired format.

You can view your final movie by clicking on the [Show](#) button in the Instant Demo editor. The [Adobe Flash Player](#) will be required to view the Flash version; and the Windows Media Player will be required to view the AVI version.

The '[Create executable](#)' option will create a single executable file that can be easily sent as an email attachment.

Copyright © 2003 - 2015 NetPlay Software
Instant Demo is a trademark of NetPlay Software.

NetPlay

Buy Now

Support

Contact Us



NetPlay

Buy Now

Support

Contact Us



The Show Movie Button

[Create - Show Demo Alt+W]

Click on this button to view your [created](#) Flash movie or video. The [Adobe Flash Player](#) will be required to view your Flash movie, and the Windows Media Player will be required to view all other video formats.

You must create your Flash movie or video (using the [Create](#) button) before the **Show** Movie button becomes active.

Copyright © 2003 - 2015 NetPlay Software
Instant Demo is a trademark of NetPlay Software.

NetPlay

Buy Now

Support

Contact Us



[NetPlay](#)

[Buy Now](#)

[Support](#)

[Contact Us](#)

Publish Instant Demo

[Create - Publish...]

You can publish your Instant Demo demonstration directly to your website using the Publish button. This option becomes available once you have exported your presentation to a web friendly format via the [Create](#) button.

You can publish your presentation to a web site (via FTP) or to YouTube.

Web Site (via FTP)

User name and password: The username and password required for the remote web site.

Remote web site location: Enter the address of the remote web site that you want to publish to. For example [www.yoursite.com](#)

FTP directory: Enter the path to the destination folder in the remote web site. For example [httpdocs/demos](#).

Include HTML Template: Check this option if you also want to publish the [html template](#) file created by Instant Demo.

Use the **Advanced** button to alter the [Advanced FTP Settings](#).

YouTube

Video Title: Enter the title of the video to be shown on YouTube.

Description: Enter the description of the video to be shown on YouTube.

Tags: Enter a series of comma separated words or phrases that best describe the video. The tags are used by search engines.

Publish as: Enter the publish status of the video. This can be public, private or unlisted. Private videos can only be shared with a defined list of users. Unlisted videos can be shared with anyone, however the link is not displayed publicly in YouTube.

Generate HTML: Check this option to generate an embedded HTML template for your YouTube video. The HTML can be used to display the YouTube video on your own website. Click on the [HTML Settings](#) button to further customize the appearance of your embedded video.

Copyright © 2003 - 2015 NetPlay Software
Instant Demo is a trademark of NetPlay Software.

[NetPlay](#)

[Buy Now](#)

[Support](#)

[Contact Us](#)

[NetPlay](#)[Buy Now](#)[Support](#)[Contact Us](#)

The Save Button

[File - Save As...]

Click on this button to save any editing changes you have made to the current movie preview. You can save the preview under the current name or select a different name to save a new version of your demo preview.

Copyright © 2003 - 2015 NetPlay Software
Instant Demo is a trademark of NetPlay Software.

[NetPlay](#)[Buy Now](#)[Support](#)[Contact Us](#)

[NetPlay](#)[Buy Now](#)[Support](#)[Contact Us](#)

Exit Instant Demo

Click on the Exit button to exit Instant Demo. You will be prompted to save your movie preview if you have made any editing changes.

Note: Holding down the **Ctrl** key when clicking on the Exit button will re-open the Instant Demo recording panel.

Copyright © 2003 - 2015 NetPlay Software
Instant Demo is a trademark of NetPlay Software.

[NetPlay](#)[Buy Now](#)[Support](#)[Contact Us](#)



[NetPlay](#)

[Buy Now](#)

[Support](#)

[Contact Us](#)

Creating your Demo

If you plan to publish your demonstration or tutorial on the Internet then we recommend the following tips when creating your demo.

Tip #1

Make sure your desktop color resolution is set to True Color (32 bit) for optimal performance ([show me how](#)).

Tip #2

Keep the physical dimension of your recording at or below 800x600 pixels. This will ensure a smooth recording of your demo and guarantee that most Internet users can view your demo correctly on their screens.

If you need to capture in full screen mode, try changing the resolution of your desktop to suit your demo size ([show me how](#)). Also set your system font to 'small fonts' which will reduce the window size of your applications, allowing you to capture at a lower desktop resolution ([show me how](#)).

Tip #3

You can keep the mouse only movements in your demo with very little file size overhead. The mouse image is captured only once by Instant Demo and then 'moved' around for the rest of the demo. The same applies to some transition scenes. Instant Demo only captures the changed portion of the display, so some transition scenes (such as selecting from a popup menu) will not add much to the final size of your demo.

Tip #4

Use a solid background color for your desktop ([show me how](#)).

Tip #5

Try to avoid moving any Windows (opening and closing is fine) during the recording of your demo. This may lead to a larger than necessary demo file size.

Tip #6

In Windows XP, you may like to use the 'Windows Classic' coloring theme to improve the final size of your movies ([Show me how](#)).

Tip #7

If bandwidth usage on your website is not a priority, then try increasing the quality of your demo in "Create->Custom->Settings..." by increasing the number of colors used to 500 or more. Instant Demo takes full advantage of Adobe streaming technology, so even large demos will load and play immediately in the viewer's browser.

Tip #8

When clicking a mouse button during recording, hold down the button for at least half a second. This allows the viewer to see the Windows response to your mouse click, such as a depressed button or a selected item.

Copyright © 2003 - 2015 NetPlay Software
Instant Demo is a trademark of NetPlay Software.

[NetPlay](#)

[Buy Now](#)

[Support](#)

[Contact Us](#)

[NetPlay](#)[Buy Now](#)[Support](#)[Contact Us](#)

Optimize Instant Demo

[Create - Create options... Alt+O - Optimize]

Instant Demo can optimize the appearance of your movie to suit different presentation requirements. Three options are available: [small file size](#), [appearance](#) and [custom](#). The custom option gives you full control over the size and appearance of your Flash movie.

Copyright © 2003 - 2015 NetPlay Software
Instant Demo is a trademark of NetPlay Software.

[NetPlay](#)[Buy Now](#)[Support](#)[Contact Us](#)

[NetPlay](#)[Buy Now](#)[Support](#)[Contact Us](#)

Optimize for Small File Size

[Create - Create options... Alt+O - Optimize]

You may wish to select this option if you plan to publish your movie on the Internet. This option will optimize the color and compression settings of your movie to minimize the final file size.

Copyright © 2003 - 2015 NetPlay Software
Instant Demo is a trademark of NetPlay Software.

[NetPlay](#)[Buy Now](#)[Support](#)[Contact Us](#)

[NetPlay](#)[Buy Now](#)[Support](#)[Contact Us](#)

Optimize for Appearance

[Create - Create options... Alt+O - Optimize]

You may wish to select this option if you plan to use your movie for off-line presentations such as CD-ROM based tutorials or help files. This option will not discard any colors in your movie and will maintain high image quality.

Copyright © 2003 - 2015 NetPlay Software
Instant Demo is a trademark of NetPlay Software.

[NetPlay](#)[Buy Now](#)[Support](#)[Contact Us](#)

[NetPlay](#)[Buy Now](#)[Support](#)[Contact Us](#)

Instant
Demo™

Custom Optimization

[Create - Create options... Alt+O - Optimize]

Select this option to use your own optimization settings. Use this option to further reduce the file size of your movie, or to increase the image quality. Click on the "**Settings...**" button to set your own compression and quality levels.

Copyright © 2003 - 2015 NetPlay Software
Instant Demo is a trademark of NetPlay Software.

[NetPlay](#)[Buy Now](#)[Support](#)[Contact Us](#)

[NetPlay](#)[Buy Now](#)[Support](#)[Contact Us](#)

Color Quality

[Create - Create options... Alt+O - Optimize - Custom - Settings...]

This option allows you to enter the maximum number of colors that will be used when creating your demo. A smaller number will give better compression but may make your demo appear more cartoon like and may cause some variation to the original color.

Use Halftone Dithering

Check this option to improve image quality for resized presentations.

Copyright © 2003 - 2015 NetPlay Software
Instant Demo is a trademark of NetPlay Software.

[NetPlay](#)[Buy Now](#)[Support](#)[Contact Us](#)

[NetPlay](#)[Buy Now](#)[Support](#)[Contact Us](#)A yellow speech bubble with a black outline containing the text "Instant Demo™".

**Instant
Demo™**

JPEG Picture Quality

[Create - Create options... Alt+O - Optimize - Custom - Settings...]

This slide control allows you to set the visual quality of real life images in your demo. JPEG is an image compression technique that is ideal for real life images. If your demo contains real life images, then adjusting this control will have an affect on the final file size and appearance of your demo. If your demo does not contain real life images, then this setting will have no effect.

Copyright © 2003 - 2015 NetPlay Software
Instant Demo is a trademark of NetPlay Software.

[NetPlay](#)[Buy Now](#)[Support](#)[Contact Us](#)



[NetPlay](#)

[Buy Now](#)

[Support](#)

[Contact Us](#)



Target File Size

[Create - Create options... Alt+O - Optimize - Custom - Settings...]

This slide control allows you to set the target export file size for your demo. A larger value will create a higher quality video.

Copyright © 2003 - 2015 NetPlay Software
Instant Demo is a trademark of NetPlay Software.

[NetPlay](#)

[Buy Now](#)

[Support](#)

[Contact Us](#)

[NetPlay](#)[Buy Now](#)[Support](#)[Contact Us](#)A yellow speech bubble with a black outline containing the text "Instant Demo™".

Instant
Demo™

Create Adobe Flash (SWF)

[Create - Create options... Alt+O - Export as: Adobe Flash]

Instant Demo will export your movie to the Adobe Flash format (SWF). This file can be used in your own web page design and uploaded to your web site using an FTP client or web publishing software. When published with a supporting HTML web page, the Flash movie will stream over an Internet connection. You can also publish this file to CD-ROM or an intranet. Instant Demo can also publish your movie in an [executable](#) format suitable for email or CD-ROM. Click on the '**Settings...**' button to further customize the appearance and sound of your Flash movie.

Copyright © 2003 - 2015 NetPlay Software
Instant Demo is a trademark of NetPlay Software.

[NetPlay](#)[Buy Now](#)[Support](#)[Contact Us](#)

[NetPlay](#)[Buy Now](#)[Support](#)[Contact Us](#)A yellow speech bubble with a black outline containing the text "Instant Demo™".

**Instant
Demo™**

HTML Web Page Template

[Create - Create options... Alt+O - Export as: Adobe Flash - Settings - Html tab]

These options allow you to create a supporting HTML web page for displaying your movie in the Adobe Flash format (SWF). When publishing, link to the created web page to ensure your demo is displayed at the correct size and quality. Displaying your Flash movie via the created web page will also enable streaming playback; your presentation will play immediately in the viewers web browser without any download delay.

Create web page

Check this option to re-create the .htm web page template when exporting to Flash. This option is enabled by default (recommended).

Web Page Display Size

This option allows you to set the final display size of your presentation. Use one of the pre-defined percentage settings or enter your own **Custom** size. Select **Preview Size** to display your presentation at the same size as the Instant Demo [Preview window](#).

Horizontal / Vertical

These options allow you to enter an alternate export size (in pixels). When the **Lock aspect ratio** option is checked, Instant Demo will automatically ensure the resized presentation is proportionally scaled. When lock aspect ratio is unchecked, Instant Demo will automatically crop the presentation to fit the required display. You can use the **TrakMouse(tm)** option to automatically zoom and pan your presentation.

Use advanced Flash compression

Instant Demo uses an advanced proprietary compression technique that may create artifacts in the Flash presentation when NOT viewed at the original recording size. Uncheck this option if noise appears in your Flash presentation when viewing at less than 100% of the original size.

Copyright © 2003 - 2015 NetPlay Software
Instant Demo is a trademark of NetPlay Software.

[NetPlay](#)

[Buy Now](#)

[Support](#)

[Contact Us](#)

[NetPlay](#)[Buy Now](#)[Support](#)[Contact Us](#)

Include Playback Controls

[Create - Export Settings... Alt+F - Controls tab - Include controls]

Select this option to add customized playback controls (implemented in Adobe Flash format) to your movie. The playback controls allow the viewer to stop, pause or play your movie. The viewer can also move to any position in the movie using a slide control.

Copyright © 2003 - 2015 NetPlay Software
Instant Demo is a trademark of NetPlay Software.

[NetPlay](#)[Buy Now](#)[Support](#)[Contact Us](#)



NetPlay

Buy Now

Support

Contact Us



Playback Control Style

[Create - Export Settings... Alt+F - Controls tab]

Use this option to select the style of the Flash playback controls. Choose between Instant Demo Classic, Glasso* or Vista control styles.

*Glasso buttons are the creation of icons-icons.com

Copyright © 2003 - 2015 NetPlay Software
Instant Demo is a trademark of NetPlay Software.

NetPlay

Buy Now

Support

Contact Us



NetPlay

Buy Now

Support

Contact Us

Instant
Demo™

Playback Control Color Scheme

[Create - Export Settings... Alt+F - Controls tab - Scheme]

You can select, save or delete a customized color scheme for the [playback controls](#).

Use the drop down list to select a new scheme. To add a new scheme, first change at least one playback control color, then click on the 'Add' button and enter a new name for the scheme. To delete a scheme, select the scheme you wish to delete from the drop down list and then click on the 'Delete' button.

Copyright © 2003 - 2015 NetPlay Software
Instant Demo is a trademark of NetPlay Software.

NetPlay

Buy Now

Support

Contact Us

[NetPlay](#)[Buy Now](#)[Support](#)[Contact Us](#)

Playback Controls Preview

[Create - Export Settings... Alt+F - Controls tab]

Instant Demo creates a Flash preview of the Playback controls when you change one of the control color settings. The preview is interactive allowing you to view the mouse over and mouse down colors.

Copyright © 2003 - 2015 NetPlay Software
Instant Demo is a trademark of NetPlay Software.

[NetPlay](#)[Buy Now](#)[Support](#)[Contact Us](#)

[NetPlay](#)[Buy Now](#)[Support](#)[Contact Us](#)Instant
Demo™

Playback Control options

[Create - Export Settings... Alt+F - Controls tab]

The following options can be used to customize the movie playback controls:

Time

Check this option to display a time indicator in the playback controls. The playback time is shown to the nearest second in h:mm:ss format. You can also display the total playback time alongside the current time via the [Show Total Time](#) advanced setting.

Volume

Check this option to add a volume control to the playback controls. The volume control can be operated by the viewer to alter the master volume of your presentation.

Full Screen

Check this option to add a full screen playback button to the playback controls. The full screen control can be operated by the viewer to toggle the presentation into a full screen view. When publishing with the full screen option, you must include the [HTML templates](#) for your website.

Tip: For a full screen presentation of a full screen recording, check the 'Controls Over Demo' advanced option (Help - Advanced options...). This will place the playback controls over your presentation providing a 100% full screen playback size with maximum clarity.

Stop/End

Check this option to add a separate Stop button and Seek to End button to the controls.

Copyright © 2003 - 2015 NetPlay Software
Instant Demo is a trademark of NetPlay Software.

[NetPlay](#)[Buy Now](#)[Support](#)[Contact Us](#)



NetPlay

Buy Now

Support

Contact Us

Instant
Demo™

Playback Control Colors

[Create - Export Settings... Alt+F - Controls tab - Colors]

Click on this button to customize the colors of the [playback controls](#).

The following can be customized:

Symbol

The color of the stop, play, etc, symbols on the control buttons.

Edge

The color used to define the edge of the buttons and the movie scrollbar.

Button

The color of the buttons when not selected by the mouse.

Mouse Over

The color of the buttons when the mouse is moved over them.

Mouse Down

The color of the buttons when clicked by the mouse.

Background

The color of the background in the playback control area.

Copyright © 2003 - 2015 NetPlay Software
Instant Demo is a trademark of NetPlay Software.

NetPlay

Buy Now

Support

Contact Us

[NetPlay](#)[Buy Now](#)[Support](#)[Contact Us](#)

Add Mouse Click Sound

[Create - Export Settings... Alt+F - Sound tab]

Instant Demo automatically records mouse button activity during the initial screen capture. Check this option to add mouse button sound effects to the demo.

Copyright © 2003 - 2015 NetPlay Software
Instant Demo is a trademark of NetPlay Software.

[NetPlay](#)[Buy Now](#)[Support](#)[Contact Us](#)

[NetPlay](#)[Buy Now](#)[Support](#)[Contact Us](#)

Add Keyboard Sound

[Create - Export Settings... Alt+F - Sound tab]

Instant Demo automatically records keyboard activity during the initial screen capture. Check this option to add keyboard sound effects to the demo.

Copyright © 2003 - 2015 NetPlay Software
Instant Demo is a trademark of NetPlay Software.

[NetPlay](#)[Buy Now](#)[Support](#)[Contact Us](#)



[NetPlay](#)

[Buy Now](#)

[Support](#)

[Contact Us](#)



Sound Effects Volume

[Create - Export Settings... Alt+F - Sound tab]

This slide control sets the volume level for the mouse button and keyboard sound effects. It does **not** alter the volume of your [nominated](#) sound files.

Copyright © 2003 - 2015 NetPlay Software
Instant Demo is a trademark of NetPlay Software.

[NetPlay](#)

[Buy Now](#)

[Support](#)

[Contact Us](#)



[NetPlay](#)

[Buy Now](#)

[Support](#)

[Contact Us](#)

MP3 / ADPCM Sound Encoding

[Create - Export Settings... Alt+F - Sound tab]

Instant Demo supports two encoding formats - MP3 and ADPCM. MP3 encoding is the preferred option as this creates higher quality audio for a given file size compared to ADPCM. MP3 however does have certain licensing requirements and you may need a broadcasting license depending on the final application of your Instant Demo movie (click [here](#) for more information or visit www.mp3licensing.com). An mp3 encoding license* is included with each Instant Demo license purchased.

Sound effects such as keyboard and mouse click sounds are always encoded using ADPCM. There are no licensing requirements for ADPCM encoding.

Compression type

Use this option to select MP3 or ADPCM encoding. There is also an option to not include sound in your demonstration.

Compression preset

Instant Demo offers five sound compression presets and a custom preset for each compression type.

Quality

For MP3 this settings specifies the maximum bit rate of the compressed sound. For ADPCM this setting specifies the number of bits used to encode the audio data. In both cases a higher bit rate gives better quality sound and poorer compression. A lower bit rate gives higher compression and poorer quality sound.

Channels

The number of audio channels to encode (stereo or mono).

Sample frequency

The output sample frequency of your encoded audio file. Instant Demo performs a high quality sample conversion (if required) during the encoding process. Lowering the frequency may produce poorer quality sound depending on the frequency range of the sound source. Lowering the frequency will provide higher compression. Raising the frequency above the source sound file sample frequency is not recommended as this will not improve sound quality,

Copyright © 2003 - 2015 NetPlay Software
Instant Demo is a trademark of NetPlay Software.

[NetPlay](#)

[Buy Now](#)

[Support](#)

[Contact Us](#)

[NetPlay](#)[Buy Now](#)[Support](#)[Contact Us](#)A yellow speech bubble with a black outline containing the text "Instant Demo™".

**Instant
Demo™**

MP3 Licensing

An mp3 encoding license* is included with each Instant Demo license purchased, however this license does not convey nor imply any right to distribute content created with Instant Demo in revenue-generating broadcast systems (terrestrial, satellite, cable and/or other distribution channels), streaming applications (via Internet, intranets and/or other networks), other content distribution systems (pay-audio or audio-on-demand applications and the like) or on physical media (compact discs, digital versatile discs, semiconductor chips, hard drives, memory cards and the like). An independent license for such use is required. For details, please visit <http://mp3licensing.com>.

*MPEG Layer-3 audio coding technology licensed from Fraunhofer IIS and Thomson. MP3 encoding is performed by the LAME MP3 encoding library (www.mp3dev.org).

Copyright © 2003 - 2015 NetPlay Software
Instant Demo is a trademark of NetPlay Software.

[NetPlay](#)[Buy Now](#)[Support](#)[Contact Us](#)



[NetPlay](#)

[Buy Now](#)

[Support](#)

[Contact Us](#)



Fade in Annotated Text

[Create - Export Settings... Alt+F - Effects tab]

Check this option to add a fade-in effect to all annotated text in your demo.

Copyright © 2003 - 2015 NetPlay Software
Instant Demo is a trademark of NetPlay Software.

[NetPlay](#)

[Buy Now](#)

[Support](#)

[Contact Us](#)



NetPlay

Buy Now

Support

Contact Us



Speak Annotated Text

[Create - Export Settings... Alt+F - Effects tab]

Check this option to automatically speak **all** talk bubble text in your movie using Microsoft speech.

Note: you can also individually control the [speech properties](#) of each talk bubble via the Instant Demo [editor](#) menu (Ctrl+E).

Copyright © 2003 - 2015 NetPlay Software
Instant Demo is a trademark of NetPlay Software.

NetPlay

Buy Now

Support

Contact Us



[NetPlay](#)

[Buy Now](#)

[Support](#)

[Contact Us](#)



Fade-in at Start

[Create - Export Settings... Alt+F - Effects tab]

Check this option to create a fade-in effect for the first frame of your demo.

Copyright © 2003 - 2015 NetPlay Software
Instant Demo is a trademark of NetPlay Software.

[NetPlay](#)

[Buy Now](#)

[Support](#)

[Contact Us](#)



[NetPlay](#)

[Buy Now](#)

[Support](#)

[Contact Us](#)



Fade-out at End

[Create - Export Settings... Alt+F - Effects tab]

Check this option to create a fade-out effect for the last frame of your demo.

Copyright © 2003 - 2015 NetPlay Software
Instant Demo is a trademark of NetPlay Software.

[NetPlay](#)

[Buy Now](#)

[Support](#)

[Contact Us](#)



[NetPlay](#)

[Buy Now](#)

[Support](#)

[Contact Us](#)



Zoom-in at Start

[Create - Export Settings... Alt+F - Effects tab]

Check this option to create a zoom-in effect for the first frame of your demo.

Copyright © 2003 - 2015 NetPlay Software
Instant Demo is a trademark of NetPlay Software.

[NetPlay](#)

[Buy Now](#)

[Support](#)

[Contact Us](#)

[NetPlay](#)[Buy Now](#)[Support](#)[Contact Us](#)

Zoom-out at End

[Create - Export Settings... Alt+F - Effects tab]

Check this option to create a zoom-out effect for the last frame of your demo.
Note that this option will increase the final size of your demo and is unchecked by default.

Copyright © 2003 - 2015 NetPlay Software
Instant Demo is a trademark of NetPlay Software.

[NetPlay](#)[Buy Now](#)[Support](#)[Contact Us](#)

[NetPlay](#)[Buy Now](#)[Support](#)[Contact Us](#)

Place playback controls at top

[Create - Export Settings... Alt+F - Effects tab]

By default Instant Demo will place the Flash playback controls at the bottom of your movie. Check this option to place the controls at the top.

Copyright © 2003 - 2015 NetPlay Software
Instant Demo is a trademark of NetPlay Software.

[NetPlay](#)[Buy Now](#)[Support](#)[Contact Us](#)

[NetPlay](#)[Buy Now](#)[Support](#)[Contact Us](#)

Instant
Demo™

Play Button at Start

[Create - Export Settings... Alt+F - Effects tab]

Check this option to place a start Play button in the middle of the presentation display area. The button style is determined by the currently selected [playback control](#) style. This option requires the viewer to click on the Play button to start your presentation.



Copyright © 2003 - 2015 NetPlay Software
Instant Demo is a trademark of NetPlay Software.

[NetPlay](#)[Buy Now](#)[Support](#)[Contact Us](#)

[NetPlay](#)[Buy Now](#)[Support](#)[Contact Us](#)


Loop Movie

[Create - Export Settings... Alt+F - Effects tab]

By default Instant Demo will create Flash movies that will loop continuously during playback. Uncheck this option to create a Flash movie that by default plays through once only.

Copyright © 2003 - 2015 NetPlay Software
Instant Demo is a trademark of NetPlay Software.

[NetPlay](#)[Buy Now](#)[Support](#)[Contact Us](#)

[NetPlay](#)[Buy Now](#)[Support](#)[Contact Us](#)

Instant
Demo™

Web Page Colors

[Create - Export Settings... Alt+F - Effects tab]

Web Page Color

Click on this button to change the surrounding web page color of your presentation. The default color is white.

Background / Border

Click on this button to change the background and border color of your Flash presentation. This will alter the background color that appears in the Zoom and Fade effects. The default color is black.

Border Width

The width of the border surrounding your presentation. Enter zero (0) for no border.

Copyright © 2003 - 2015 NetPlay Software
Instant Demo is a trademark of NetPlay Software.

[NetPlay](#)[Buy Now](#)[Support](#)[Contact Us](#)



NetPlay

Buy Now

Support

Contact Us

Instant
Demo™

Add Chapter Index

[Create - Export Settings... Alt+F - Effects tab]

Check this option to add a [Chapter Index](#) to your Flash movie. Click on the [Chapter settings...](#) button to set the size and appearance of the the chapter index.

See [How to Add a Chapter Index](#) for more information on using chapters in your presentation.

Copyright © 2003 - 2015 NetPlay Software
Instant Demo is a trademark of NetPlay Software.

NetPlay

Buy Now

Support

Contact Us



[NetPlay](#)

[Buy Now](#)

[Support](#)

[Contact Us](#)



Display Mouse

[Create - Export Settings... Alt+F - Mouse tab]

Uncheck this option if you do not wish to display the mouse in your demo.

Copyright © 2003 - 2015 NetPlay Software
Instant Demo is a trademark of NetPlay Software.

[NetPlay](#)

[Buy Now](#)

[Support](#)

[Contact Us](#)

[NetPlay](#)[Buy Now](#)[Support](#)[Contact Us](#)

Highlight Mouse

[Create - Export Settings... Alt+F - Mouse tab]

Check **Highlight Mouse** to place a highlight around the mouse pointer for the entire movie.

Copyright © 2003 - 2015 NetPlay Software
Instant Demo is a trademark of NetPlay Software.

[NetPlay](#)[Buy Now](#)[Support](#)[Contact Us](#)



[NetPlay](#)

[Buy Now](#)

[Support](#)

[Contact Us](#)



Mouse Shadow

[Create - Export Settings... Alt+F - Mouse tab]

Check this option to add a drop shadow to the mouse pointer.

Copyright © 2003 - 2015 NetPlay Software
Instant Demo is a trademark of NetPlay Software.

[NetPlay](#)

[Buy Now](#)

[Support](#)

[Contact Us](#)

[NetPlay](#)[Buy Now](#)[Support](#)[Contact Us](#)

Show Hidden Mouse Activity

[Create - Export Settings... Alt+F - Mouse tab]

Check this option to display hidden mouse activity.

The Windows hardware cursor can be hidden by an application. This usually happens when a custom mouse cursor is required that is beyond the capabilities of the hardware cursor. By default Instant Demo will display this hidden activity. Uncheck this option to disable mouse clicks and mouse highlight when the Windows hardware cursor is hidden.

Copyright © 2003 - 2015 NetPlay Software
Instant Demo is a trademark of NetPlay Software.

[NetPlay](#)[Buy Now](#)[Support](#)[Contact Us](#)

[NetPlay](#)[Buy Now](#)[Support](#)[Contact Us](#)

Animate Mouse Clicks

[Create - Export Settings... Alt+F - Mouse tab]

Instant Demo automatically records mouse button activity during your initial screen capture. Check this option to display recorded mouse clicks as an animated circle under the cursor.

Copyright © 2003 - 2015 NetPlay Software
Instant Demo is a trademark of NetPlay Software.

[NetPlay](#)[Buy Now](#)[Support](#)[Contact Us](#)

[NetPlay](#)[Buy Now](#)[Support](#)[Contact Us](#)

Instant
Demo™

Animated Mouse Click Style

[Create - Export settings... Alt+F - Mouse tab]

Use this window to change the style of the animated mouse click. You can change both the color and size of the animation. To increase the size move the slider towards the right. To decrease the size, move the slider towards the left.

Check **Highlight Mouse** to place a highlight around the mouse pointer for the entire movie.

Copyright © 2003 - 2015 NetPlay Software
Instant Demo is a trademark of NetPlay Software.

[NetPlay](#)[Buy Now](#)[Support](#)[Contact Us](#)

[NetPlay](#)[Buy Now](#)[Support](#)[Contact Us](#)A yellow speech bubble with a black outline containing the text "Instant Demo™".

**Instant
Demo™**

Create SCORM 1.2 Resource

[Create - Export Settings... Alt+F - Scorm tab]

Select this option to create a Sharable Content Object Reference Model (SCORM) 1.2 compliant resource package for use with other E-Learning management systems. Instant Demo will create a sub-directory with the same name as your output filename suffixed with '_SCORM'. This directory will contain all the files needed to import your demonstration as a resource into a learning management system. You can also optionally compress these files into a single PIF (ZIP) file by selecting the 'Create PIF / ZIP' option.

You can find out more about the SCORM initiative [here](#).

Copyright © 2003 - 2015 NetPlay Software
Instant Demo is a trademark of NetPlay Software.

[NetPlay](#)[Buy Now](#)[Support](#)[Contact Us](#)



[NetPlay](#)

[Buy Now](#)

[Support](#)

[Contact Us](#)



SCORM Resource Identifier

[Create - Export Settings... Alt+F - Scorm tab]

Use this edit box to assign your own resource ID to the SCORM package.

Copyright © 2003 - 2015 NetPlay Software
Instant Demo is a trademark of NetPlay Software.

[NetPlay](#)

[Buy Now](#)

[Support](#)

[Contact Us](#)



[NetPlay](#)

[Buy Now](#)

[Support](#)

[Contact Us](#)



Resource Version

[Create - Export Settings... Alt+F - Scorm tab]

Use this edit box to assign your own resource version to the SCORM package.

Copyright © 2003 - 2015 NetPlay Software
Instant Demo is a trademark of NetPlay Software.

[NetPlay](#)

[Buy Now](#)

[Support](#)

[Contact Us](#)

[NetPlay](#)[Buy Now](#)[Support](#)[Contact Us](#)A yellow speech bubble with a black outline containing the text "Instant Demo™".

**Instant
Demo™**

Create PIF / ZIP

[Create - Export Settings... Alt+F - Scorm tab]

Select this option to compress your resource package into a single PIF (ZIP) file. The resulting .zip file is created in the same directory as your resource files, which is a sub-directory with the same name as your output filename suffixed with '_SCORM'.

Copyright © 2003 - 2015 NetPlay Software
Instant Demo is a trademark of NetPlay Software.

[NetPlay](#)[Buy Now](#)[Support](#)[Contact Us](#)

[NetPlay](#)[Buy Now](#)[Support](#)[Contact Us](#)

Advanced Flash Settings

[Create - Export Settings... Alt+F - Advanced tab]

These options set advanced Flash features including a custom [Information Panel](#) for your movie. The advanced settings panel is only available in the Professional version of Instant Demo.

Copyright © 2003 - 2015 NetPlay Software
Instant Demo is a trademark of NetPlay Software.

[NetPlay](#)[Buy Now](#)[Support](#)[Contact Us](#)

[NetPlay](#)[Buy Now](#)[Support](#)[Contact Us](#)A yellow speech bubble containing the text "Instant Demo™".

**Instant
Demo™**

Flash Frame Rate

[Create - Export Settings... Alt+F - Advanced tab]

When this value is set to Auto (or zero), Instant Demo calculates a default Flash frame rate based on the length of your movie. You can override this default by assigning a non zero value here. For example a value of 20 will ensure that your Flash movie will be exported at a fixed 20 frames per second. The default (and recommended) setting is Auto. This option is only available in the Professional version of Instant Demo.

Copyright © 2003 - 2015 NetPlay Software
Instant Demo is a trademark of NetPlay Software.

[NetPlay](#)[Buy Now](#)[Support](#)[Contact Us](#)

[NetPlay](#)[Buy Now](#)[Support](#)[Contact Us](#)

Flash Text Display Rate

[Create - Export Settings... Alt+F - Advanced tab]

This value scales the talk bubble display time for **all** talk bubbles in your exported Flash movie. A value of 2.0 will double the talk bubble display time, a value of 0.5 will halve the display time. Note that changing this value may result in loss of sound synchronization. The default value is 1.0. This option is only available in the Professional version of Instant Demo.

Copyright © 2003 - 2015 NetPlay Software
Instant Demo is a trademark of NetPlay Software.

[NetPlay](#)[Buy Now](#)[Support](#)[Contact Us](#)

[NetPlay](#)[Buy Now](#)[Support](#)[Contact Us](#)

Adobe Flash 6.0 Compression

[Create - Export Settings... Alt+F - Advanced tab]

By default Instant Demo uses a compression technique introduced in Flash 6.0. When checked, version 6.0 (or higher) of the Adobe Flash player is required to view Instant Demo movies. To view Instant Demo movies with Adobe players version 4.0 and 5.0, uncheck this option (Professional version only).

Copyright © 2003 - 2015 NetPlay Software
Instant Demo is a trademark of NetPlay Software.

[NetPlay](#)[Buy Now](#)[Support](#)[Contact Us](#)

[NetPlay](#)[Buy Now](#)[Support](#)[Contact Us](#)

A yellow speech bubble icon with the text "Instant Demo" inside.

Custom Author Information

[Create - Export Settings... Alt+F - Advanced tab]

You can provide a custom image (such as an author information panel) to the info 'i' button in the playback controls. This option is only available in the Professional version of Instant Demo.

Info Panel Image: Enter the full path name to the image file or use the 'Browse' button to select the file. Instant Demo supports a wide range of image formats.

Info Panel URL / Command: Use this option to assign a URL to your information panel. The URL can be of any type, including an HTML file, an image or another Flash movie. If your demo is playing in a web browser, the URL will be displayed in the window or frame specified by the Target.

Target: You can select a target from the drop down list, or enter your own target string. The target name “_level0” can be used to load another demo (or any other Flash movie) into the same Flash window, replacing the current demo. The target name “_level1” can be used to place another Flash movie over the current demo. If a "_level1" demo has any transparent regions, then the original demo will show through from underneath.

Show Info Button: Uncheck this option to hide the Instant Demo information icon in the playback controls.

Copyright © 2003 - 2015 NetPlay Software
Instant Demo is a trademark of NetPlay Software.

[NetPlay](#)[Buy Now](#)[Support](#)[Contact Us](#)

[NetPlay](#)[Buy Now](#)[Support](#)[Contact Us](#)

Show Info Button

Uncheck this option to hide the Instant Demo information icon in the playback controls.

Copyright © 2003 - 2015 NetPlay Software
Instant Demo is a trademark of NetPlay Software.

[NetPlay](#)[Buy Now](#)[Support](#)[Contact Us](#)

[NetPlay](#)[Buy Now](#)[Support](#)[Contact Us](#)A yellow speech bubble with a black outline containing the text "Instant Demo™".

**Instant
Demo™**

Create Video

[Create - Create options... Alt+O - Export as: select video format]

This option will allow you to publish your movie to many video industry standards such as AVI, DVD, DivX, MPEG-2/4, YouTube, iPod, Mobile and so on. Many of these formats can be viewed in the Windows Media Player and can be imported by other video editing products. Click on the 'Settings...' button to further customize the appearance and sound of your movie.

Copyright © 2003 - 2015 NetPlay Software
Instant Demo is a trademark of NetPlay Software.

[NetPlay](#)[Buy Now](#)[Support](#)[Contact Us](#)



NetPlay

Buy Now

Support

Contact Us



Video Compression

[Create - Create options... Alt+O - Export as:AVI - Settings - Video tab]

Click on this button to select the video compression (codec) used for your AVI movie. Instant Demo supports most video for Windows codec's. Some example codec's can be found at www.instant-demo.com/video_codecs.htm

Copyright © 2003 - 2015 NetPlay Software
Instant Demo is a trademark of NetPlay Software.

NetPlay

Buy Now

Support

Contact Us

[NetPlay](#)[Buy Now](#)[Support](#)[Contact Us](#)

A yellow speech bubble containing the text "Instant Demo" in black, with a small trademark symbol (™) after "Demo".

Video Settings

[Create - Create options... Alt+O - Export as: - Settings - Video tab]

Screen Size: Most video codecs support industry standard screen sizes (in pixels). Use this option to select the screen size you wish to publish to. Select **Same Size** if you wish to use the same dimension as your project. Select **Custom** to enter your own Horizontal and Vertical screen size in pixels. Please note that some codecs do not support all screen sizes. If the create fails then you may need to use an alternate size.

Frame Rate: This is the desired playback frame rate in frames per second. A lower frame rate may improve compression. Please note that some video formats do require a certain frame rate for successful playback.

Stretch video: If the export screen size does not match the original capture screen size, then Instant Demo will preserve the aspect ratio of your presentation by placing a black bar on each side of the video. Check this option to remove the black bars and stretch the presentation to exactly fit the video size.

Copyright © 2003 - 2015 NetPlay Software
Instant Demo is a trademark of NetPlay Software.

[NetPlay](#)[Buy Now](#)[Support](#)[Contact Us](#)

[NetPlay](#)[Buy Now](#)[Support](#)[Contact Us](#)

Add Mouse Click Sound

[Create - Create options... Alt+O - Export as: - Settings - Sound tab]

Instant Demo automatically records mouse button activity during the initial screen capture. Check this option to add mouse button sound effects to the demo.

Copyright © 2003 - 2015 NetPlay Software
Instant Demo is a trademark of NetPlay Software.

[NetPlay](#)[Buy Now](#)[Support](#)[Contact Us](#)

[NetPlay](#)[Buy Now](#)[Support](#)[Contact Us](#)

Add Keyboard Sound

[Create - Create options... Alt+O - Export as: - Settings - Sound tab]

Instant Demo automatically records keyboard activity during the initial screen capture. Check this option to add keyboard sound effects to the demo.

Copyright © 2003 - 2015 NetPlay Software
Instant Demo is a trademark of NetPlay Software.

[NetPlay](#)[Buy Now](#)[Support](#)[Contact Us](#)

[NetPlay](#)[Buy Now](#)[Support](#)[Contact Us](#)

Sound Effects Volume

[Create - Create options... Alt+O - Export as: - Settings - Sound tab]

This slide control sets the volume level for the mouse button and keyboard sound effects. It does **not** alter the volume of your [nominated](#) sound files.

Copyright © 2003 - 2015 NetPlay Software
Instant Demo is a trademark of NetPlay Software.

[NetPlay](#)[Buy Now](#)[Support](#)[Contact Us](#)



[NetPlay](#)

[Buy Now](#)

[Support](#)

[Contact Us](#)



PCM Sound Encoding

[Create - Create options... Alt+O - Export as: - Settings - Sound tab]

There are no licensing requirements for PCM encoding.

Compression type

PCM encoding. There is also an option to not include sound in your demonstration.

Compression preset

Instant Demo offers five sound compression presets and a custom preset for each compression type.

Quality

For PCM this setting specifies the number of bits used to encode the audio data. Using 16 bits gives superior quality sound and poorer compression. Using 8 bits gives higher compression and poorer quality sound.

Channels

The number of audio channels to encode (stereo or mono).

Sample frequency

The output sample frequency of your encoded audio file. Instant Demo performs a high quality sample conversion (if required) during the encoding process. Lowering the frequency may produce poorer quality sound depending on the frequency range of the sound source. Lowering the frequency will provide higher compression. Raising the frequency above the source sound file sample frequency is not recommended as this will not improve sound quality, and it will increase the size of your video file. For a typical voice sound track, a sample frequency of 11kHz will provide good compression with little loss in sound quality.

[NetPlay](#)

[Buy Now](#)

[Support](#)

[Contact Us](#)



NetPlay

Buy Now

Support

Contact Us



Video Effects Settings

[Create - Export Settings... Alt+F - Effects tab]

See the [Adobe Flash Effects Settings](#) for more information.

Copyright © 2003 - 2015 NetPlay Software
Instant Demo is a trademark of NetPlay Software.

NetPlay

Buy Now

Support

Contact Us



NetPlay

Buy Now

Support

Contact Us

Instant
Demo™

Video Mouse Settings

[Create - Export Settings... Alt+F - Mouse tab]

See the [Adobe Flash Mouse Export Settings](#) for more information.

Copyright © 2003 - 2015 NetPlay Software
Instant Demo is a trademark of NetPlay Software.

NetPlay

Buy Now

Support

Contact Us



NetPlay

Buy Now

Support

Contact Us



Video SCORM Settings

[Create - Export Settings... Alt+F - Scorm tab]

See the [Adobe Flash SCORM Settings](#) for more information.

Copyright © 2003 - 2015 NetPlay Software
Instant Demo is a trademark of NetPlay Software.

NetPlay

Buy Now

Support

Contact Us

[NetPlay](#)[Buy Now](#)[Support](#)[Contact Us](#)A yellow speech bubble with a black outline containing the text "Instant Demo™".

**Instant
Demo™**

Optional output - Create Executable

[Create - Create options... Alt+O - Optional output]

When exporting your movie to the Adobe Flash format, you can also create a Windows executable version of your presentation. The executable can be used for publishing to CD or for attaching to an email. Click on the 'Settings...' button next to this option to fine tune the appearance and functionality of the executable.

Copyright © 2003 - 2015 NetPlay Software
Instant Demo is a trademark of NetPlay Software.

[NetPlay](#)[Buy Now](#)[Support](#)[Contact Us](#)



[NetPlay](#)

[Buy Now](#)

[Support](#)

[Contact Us](#)



Executable Settings / Instant Demo Flash player

[Create - Create options... Alt+O - Optional output - Settings...]

Use these options to select the playback mode of your executable Flash movie. Your movie can be viewed via the default web browser or use the Instant Demo Flash player.

The Instant Demo Flash player provides a 'cleaner' interface for your movie without the presence of additional buttons and control bars. The Instant Demo Flash player can also display your movie in full screen mode and can exit automatically when the movie finishes.

Check the '**Full screen presentation**' option to play your Flash movie in full screen mode with the Instant Demo Flash player.

The '**About menu text**' option can be used to add a system menu entry to the Instant Demo Flash player. Right click on the player to access this menu item. This option is only available in the Professional version of Instant Demo and is only enabled if the 'i' button in the Flash playback controls has been customized. More information on Custom Author Information can be found [here](#).

Check the '**Allow right mouse click on hotspots**' option to allow the viewer to use the right mouse button in your presentation. The option is only available with the Instant Demo Flash Player. The About menu items for your presentation and the Adobe Flash player are still accessible through the Players title bar and the Players task bar entry.

Check the '**Play from URL**' option if you do not want to store the created Flash file in the executable. When checked, the Instant Demo Flash Player will instead fetch the Flash file from the nominated URL. The fetched movie will be streamed into the Player and will play immediately regardless of file size. This option is ideal if you want full screen or right mouse button functionality in your presentation but you do not want to distribute the full Flash file. Using this option will create an executable with a maximum file size of 230 KB.

You can also send commands to the Instant Demo Flash Player from your presentation. You can change to a full screen (or window) presentation via the [Hotspot](#) and [Frame](#) 'URL / Command' styles using the Adobe [FSCommand action](#). To automatically exit the Instant Demo Flash player, use 'fscommand:quit' in the URL / Command field of your last frame.

Copyright © 2003 - 2015 NetPlay Software
Instant Demo is a trademark of NetPlay Software.

[NetPlay](#)

[Buy Now](#)

[Support](#)

[Contact Us](#)

[NetPlay](#)[Buy Now](#)[Support](#)[Contact Us](#)

Advanced Configuration

[[Help - Advanced options...](#)]

This section contains further setup information for advanced users of Instant Demo.

Copyright © 2003 - 2015 NetPlay Software
Instant Demo is a trademark of NetPlay Software.

[NetPlay](#)[Buy Now](#)[Support](#)[Contact Us](#)

[NetPlay](#)[Buy Now](#)[Support](#)[Contact Us](#)

Instant
Demo™

Advanced Chapter Settings

(Professional version only)

When using chapters, it is possible to programmatically start your presentation at a given chapter by passing the Flash variable 'start' to your presentation.

To start the presentation at a given chapter set the variable 'start' to 'chapterX' where X is the required chapter entry.

For example, to start at the second chapter entry via html do the following:

modify the OBJECT movie parameter as follows:

PARAM NAME=movie VALUE="file.swf?start=chapter2"

and the EMBED src parameter as:

src="file.swf?start=chapter2"

Note: substitute 'file.swf' with the name of your exported flash file.

See also [How to Add a Chapter Index](#) for more information on using chapters in your presentation.

Copyright © 2003 - 2015 NetPlay Software
Instant Demo is a trademark of NetPlay Software.

[NetPlay](#)[Buy Now](#)[Support](#)[Contact Us](#)



[NetPlay](#)

[Buy Now](#)

[Support](#)

[Contact Us](#)

Advanced Options

[Help - Advanced Options...]

The Advanced Options window can be accessed via the Help menu within Instant Demo. The following advanced options are available:

Temporary Files Location

This sets the location for any temporary files created by Instant Demo during the recording process. Recording screen activity requires a large amount of disk space, as such you may wish to change this location to another disk drive.

Export Timing Data

When checked, any movie you save will also have an associated *_timing_data.txt file. This file will contain a line for each frame of your movie with the following information:

Frame Number, Frame delay, Frame deleted (Y/N), Talk bubble text.

This file may be processed by a scripting language or imported into a spreadsheet program and modified accordingly. Any changes to the file are automatically applied each time you load the associated idemo project file. Changes do not become permanent until you re-save the idemo project.

Enable Sync Sound

When checked, this option will allow you to synchronize **any** sound file via the '[Synchronize sound](#)' option in the Instant Demo editor. By default (unchecked) only sound recorded with Instant Demo can be synchronized. Enable this option if you wish to synchronize a sound track recorded with an earlier version of Instant Demo (v4.00 or below).

Continue Playing

When checked, the Flash playback controls *skip ahead*, *skip back* and the *scrollbar* will not pause your movie when operated. The default behavior of these controls is to pause your Flash movie when they are operated by the viewer.

Continuous Recording

When checked, this option alters the default screen recording behavior of Instant Demo. When checked, this option will force Instant Demo to generate additional frames during periods of idle screen activity. Use this option if you wish to have finer control over editing the captured video or sound.

Controls Over Demo

When checked, this option places the Flash playback controls over the top of your demonstration. This is useful if you wish to show a full screen recording on a computer with the same full screen dimensions. When unchecked, the controls are placed above or below the presentation.

Copyright © 2003 - 2015 NetPlay Software
Instant Demo is a trademark of NetPlay Software.

[NetPlay](#)

[Buy Now](#)

[Support](#)

[Contact Us](#)



[NetPlay](#)

[Buy Now](#)

[Support](#)

[Contact Us](#)

Programmatically controlling Instant Demo

Instant Demo provides several features for creating a screen capture under the control of another Windows program. The following information is for advanced users and software developers who wish to use Instant Demo in this manner.

InstantDemo.exe command line options (Professional version only):

/r:filename - Will cause Instant Demo to start recording immediately to the specified file.

/s:top,left,bottom,right - Defines the recording region. If this option is not specified, then the last recording region will be used.

/p - Enables pan while recording.

/h - Hides both the selection rectangle and the Stop icon during recording.

/c - Automatically exports the recording to the Adobe Flash format. The created Flash and HTML template files are saved under the same name and directory as the original recording. This option can also be used to open and export an existing .idemo project, allowing for batch conversions. Example usage:
InstantDemo.exe /c <project_name.idemo>

The following Windows API functions can be used to control the recording session (Professional version only):

```
// System Event handle for communicating pause state to Instant Demo.  
HANDLE PauseEvent = CreateEvent (NULL, TRUE, FALSE,  
"PAUSE_INSTANT_DEMO");  
SetEvent (PauseEvent); // Pause recording  
ResetEvent (PauseEvent); // Continue recording
```

```
// System Event handle to save (and exit) a recording.  
HANDLE SaveEvent = CreateEvent (NULL, TRUE, FALSE,  
"SAVE_INSTANT_DEMO");  
SetEvent (SaveEvent); // Save (and exit) the recording - SaveEvent is reset when  
Instant Demo exits.
```

An example VC++ project and ActiveX control can be found at the following location:

<http://www.instant-demo.com/IDRemote/InstantDemoRemote.zip>

You can download the compiled binary for this project from here:

Copyright © 2003 - 2015 NetPlay Software
Instant Demo is a trademark of NetPlay Software.

[NetPlay](#)

[Buy Now](#)

[Support](#)

[Contact Us](#)

[NetPlay](#)[Buy Now](#)[Support](#)[Contact Us](#)

Editing how to...

The following topics show how to perform some of the common editing tasks in Instant Demo.

Copyright © 2003 - 2015 NetPlay Software
Instant Demo is a trademark of NetPlay Software.

[NetPlay](#)[Buy Now](#)[Support](#)[Contact Us](#)

[NetPlay](#)[Buy Now](#)[Support](#)[Contact Us](#)

**Instant
Demo™**

How to capture ALL sound on your computer

You can record ALL sound activity on your computer system with Instant Demo if your sound card supports 'Wave Out' recording. The following demonstration shows how to set up your computer for simultaneous recording of microphone and application sounds:



Copyright © 2003 - 2015 NetPlay Software
Instant Demo is a trademark of NetPlay Software.

[NetPlay](#)[Buy Now](#)[Support](#)[Contact Us](#)

[NetPlay](#)[Buy Now](#)[Support](#)[Contact Us](#)A yellow speech bubble containing the text "Instant Demo™".

Instant
Demo™

How to capture DVD video - avoiding a black screen

Many video or DVD playback applications use a special playback mode that displays directly to your video hardware. To capture video from these applications you must select the '[Capture video hardware](#)' via the 'More Options...' button in the Instant Demo recording panel. In all cases you **must** start Instant Demo with this option selected **before** opening the video playback application. If your Instant Demo recording captures only a black square instead of the desired video output, then you need to close down the video player software, click on the 'Record' button in Instant Demo, and then re-start the video player.

If part of the display is still missing from your video capture, then you may also need to enable capturing of [transparent windows](#) via the 'More Options...' button in the Instant Demo recording panel.

Copyright © 2003 - 2015 NetPlay Software
Instant Demo is a trademark of NetPlay Software.

[NetPlay](#)[Buy Now](#)[Support](#)[Contact Us](#)

[NetPlay](#)[Buy Now](#)[Support](#)[Contact Us](#)A yellow speech bubble with a black outline containing the text "Instant Demo™".

**Instant
Demo™**

How to edit a frame image

Right click on the [Preview Window](#) to activate the Preview Window menu. Select 'Edit' to edit the current frame with the default image editor, or select 'Edit With...' to use an image editor of your choice. Any changes saved in the image editor will appear in the preview window. Use 'Copy' and 'Paste' to copy the current frame image to and from the Windows clipboard.

Copyright © 2003 - 2015 NetPlay Software
Instant Demo is a trademark of NetPlay Software.

[NetPlay](#)[Buy Now](#)[Support](#)[Contact Us](#)

[NetPlay](#)[Buy Now](#)[Support](#)[Contact Us](#)

Instant
Demo™

How to permanently remove deleted frames

When editing, right click on the [Preview Window](#) to activate the Preview Window menu. Select 'Deleted Frames -> Remove' and follow the on-screen prompts.

Copyright © 2003 - 2015 NetPlay Software
Instant Demo is a trademark of NetPlay Software.

[NetPlay](#)[Buy Now](#)[Support](#)[Contact Us](#)

[NetPlay](#)[Buy Now](#)[Support](#)[Contact Us](#)A yellow speech bubble with a black outline containing the text "Instant Demo™".

**Instant
Demo™**

How to insert a duplicate frame

When editing, right click on the [Preview Window](#) to activate the Preview Window menu. Select 'Insert Duplicate Frame'. You can also type <Alt-D> when the Preview Window has input focus.

Copyright © 2003 - 2015 NetPlay Software
Instant Demo is a trademark of NetPlay Software.

[NetPlay](#)[Buy Now](#)[Support](#)[Contact Us](#)

[NetPlay](#)[Buy Now](#)[Support](#)[Contact Us](#)

How to change the screen size of your movie

You can change the preview screen size of your movie by using the 'Preview Size' option in the Instant Demo [Editor Window](#) or by resizing the [Preview Window](#) with the mouse.

To set the final export screen size of your presentation, use the corresponding [Adobe Flash](#) or [Video](#) size options.

Copyright © 2003 - 2015 NetPlay Software
Instant Demo is a trademark of NetPlay Software.

[NetPlay](#)[Buy Now](#)[Support](#)[Contact Us](#)

[NetPlay](#)[Buy Now](#)[Support](#)[Contact Us](#)

How to combine Instant Demo movies

You can [combine](#) two or more movies using the 'Combine' button found just below the 'Edit Demo' button in the Instant Demo [Recording Panel](#). If you are currently editing a movie, you will need to re-start Instant Demo (save and exit your current project) to show the recording panel.

Copyright © 2003 - 2015 NetPlay Software
Instant Demo is a trademark of NetPlay Software.

[NetPlay](#)[Buy Now](#)[Support](#)[Contact Us](#)



NetPlay

Buy Now

Support

Contact Us

Instant
Demo™

How to Add a Chapter Index

(Professional version only)

Using the Movie Scrollbar position to the frame in your movie that defines the start of your chapter. From the main menu select **Format - Chapter - Add/Edit Chapter Alt+R**. Enter the index title for this chapter and click on OK. Repeat this process for all chapter start locations within your movie.

From the main menu select **Format - Chapter - Settings...** to set the position and appearance of your Chapter Index.

From the main menu select **Create - Export Settings... Alt+F - Effects tab**. Make sure the [Add chapter index](#) option is checked.

Export to Flash via the **Create** button in the Instant Demo editor. Once created, you can view your presentation complete with chapter index via the **Show** button.

Copyright © 2003 - 2015 NetPlay Software
Instant Demo is a trademark of NetPlay Software.

NetPlay

Buy Now

Support

Contact Us

[NetPlay](#)[Buy Now](#)[Support](#)[Contact Us](#)

Instant Demo Tutorials

Welcome to the Instant Demo tutorials. Click on the links below to view the instant demo recordings of Instant Demo:

[Tutorial 1 - Record an Instant Demo](#)

Shows how to select the recording region on your desktop and to start recording your own demo. Running time is 86 seconds. Demo size is 92 KB.

[Tutorial 2 - Add annotated text](#)

Learn how to quickly and easily annotate your recorded demo. Running time is 97 seconds. Demo size is 145 KB.

[Tutorial 3 - Navigating with the scrollbar](#)

Learn how to quickly find edited frames within your demo. Running time is 75 seconds. Demo size is 40 KB.

[Tutorial 4 - Deleting frames](#)

Discover how to delete one or more frames from your final demo. Running time is 86 seconds. Demo size is 46 KB.

[Tutorial 5 - Placing mouse hotspots](#)

Create interactive tutorials by placing mouse hotspots in your demonstration. Running time is 75 seconds. Demo size is 128 KB.

[Tutorial 6 - Editing a frame image](#)

Edit any frame in your movie with your favourite imaging software. Running time is 95 seconds. Demo size is 124 KB.

[Tutorial 7 - Add sound to your demo](#)

Bring your demonstration to life by adding a sound stream to your movie. Running time is 120 seconds. Demo size is 65 KB.

[Tutorial 8 - Add multiple text - Professional Version](#)

Demonstrates how to use the professional features of Instant Demo. Running time is 145 seconds. Demo size is 157 KB.

[Tutorial 9 - Add multiple hotspots - Professional Version](#)

Demonstrates how to add multiple interactive hotspots to your movie. Running time is 185 seconds. Demo size is 175 KB.

[Tutorial 10 - Editing the recorded mouse](#)

Demonstrates how to alter the recorded mouse activity in your movie. Running time is 109 seconds. Demo size is 111 KB.

[Tutorial 11 - Editing the delay for multiple frames](#)

Demonstrates how to apply a given delay across multiple frames. Running time is 227 seconds. Demo size is 73 KB.

Copyright © 2003 - 2015 NetPlay Software
Instant Demo is a trademark of NetPlay Software.

[NetPlay](#)

[Buy Now](#)

[Support](#)

[Contact Us](#)



[NetPlay](#)

[Buy Now](#)

[Support](#)

[Contact Us](#)



Copyright © 2003 - 2015 NetPlay Software
Instant Demo is a trademark of NetPlay Software.

[NetPlay](#)

[Buy Now](#)

[Support](#)

[Contact Us](#)



[NetPlay](#)

[Buy Now](#)

[Support](#)

[Contact Us](#)



Copyright © 2003 - 2015 NetPlay Software
Instant Demo is a trademark of NetPlay Software.

[NetPlay](#)

[Buy Now](#)

[Support](#)

[Contact Us](#)

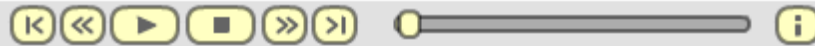


[NetPlay](#)

[Buy Now](#)

[Support](#)

[Contact Us](#)



Copyright © 2003 - 2015 NetPlay Software
Instant Demo is a trademark of NetPlay Software.

[NetPlay](#)

[Buy Now](#)

[Support](#)

[Contact Us](#)



[NetPlay](#)

[Buy Now](#)

[Support](#)

[Contact Us](#)



Copyright © 2003 - 2015 NetPlay Software
Instant Demo is a trademark of NetPlay Software.

[NetPlay](#)

[Buy Now](#)

[Support](#)

[Contact Us](#)



[NetPlay](#)

[Buy Now](#)

[Support](#)

[Contact Us](#)



Copyright © 2003 - 2015 NetPlay Software
Instant Demo is a trademark of NetPlay Software.

[NetPlay](#)

[Buy Now](#)

[Support](#)

[Contact Us](#)



[NetPlay](#)

[Buy Now](#)

[Support](#)

[Contact Us](#)



Copyright © 2003 - 2015 NetPlay Software
Instant Demo is a trademark of NetPlay Software.

[NetPlay](#)

[Buy Now](#)

[Support](#)

[Contact Us](#)



[NetPlay](#)

[Buy Now](#)

[Support](#)

[Contact Us](#)



Copyright © 2003 - 2015 NetPlay Software
Instant Demo is a trademark of NetPlay Software.

[NetPlay](#)

[Buy Now](#)

[Support](#)

[Contact Us](#)



[NetPlay](#)

[Buy Now](#)

[Support](#)

[Contact Us](#)



Copyright © 2003 - 2015 NetPlay Software
Instant Demo is a trademark of NetPlay Software.

[NetPlay](#)

[Buy Now](#)

[Support](#)

[Contact Us](#)



[NetPlay](#)

[Buy Now](#)

[Support](#)

[Contact Us](#)



Copyright © 2003 - 2015 NetPlay Software
Instant Demo is a trademark of NetPlay Software.

[NetPlay](#)

[Buy Now](#)

[Support](#)

[Contact Us](#)



[NetPlay](#)

[Buy Now](#)

[Support](#)

[Contact Us](#)



Copyright © 2003 - 2015 NetPlay Software
Instant Demo is a trademark of NetPlay Software.

[NetPlay](#)

[Buy Now](#)

[Support](#)

[Contact Us](#)

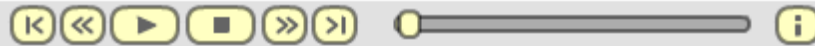


[NetPlay](#)

[Buy Now](#)

[Support](#)

[Contact Us](#)



Copyright © 2003 - 2015 NetPlay Software
Instant Demo is a trademark of NetPlay Software.

[NetPlay](#)

[Buy Now](#)

[Support](#)

[Contact Us](#)